

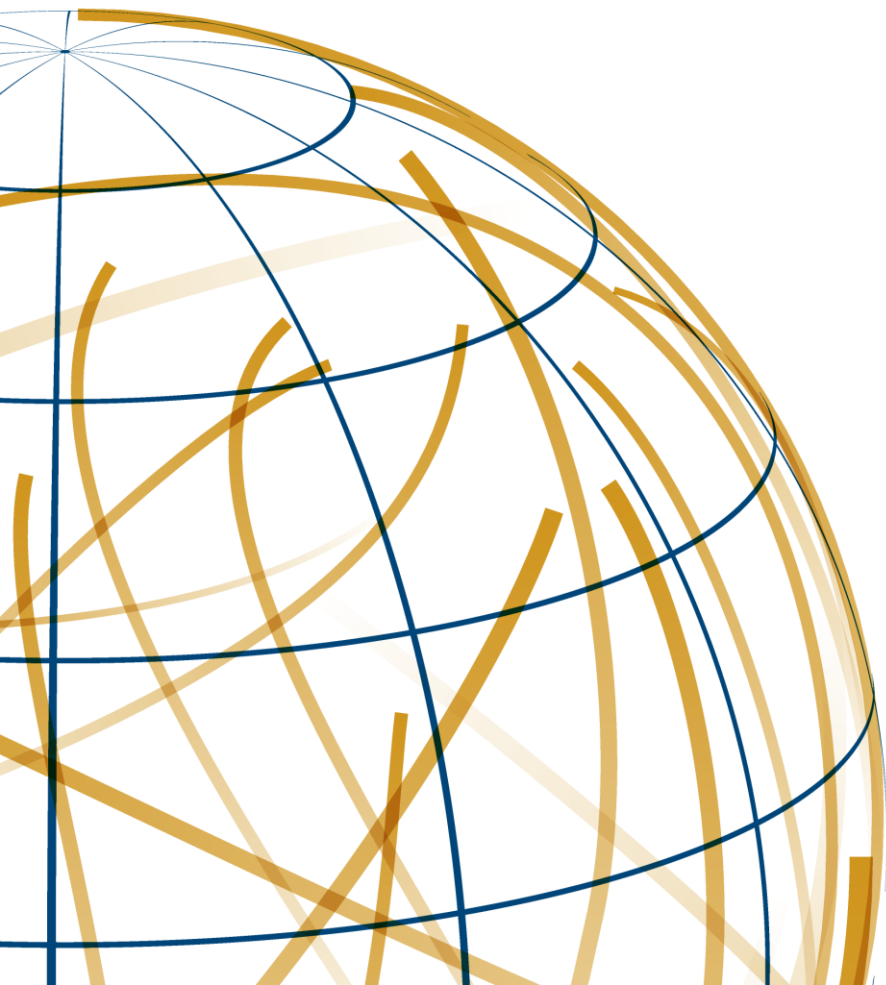
SWP Research Paper

---

*Anne Koch*

# On the Run in Their Own Country

Political and Institutional Challenges in the  
Context of Internal Displacement



Stiftung Wissenschaft und Politik  
German Institute for  
International and Security Affairs

SWP Research Paper 5  
May 2020, Berlin

- Although cross-border flight has been high on the international agenda for several years, the more wide-spread phenomenon of internal displacement has received scant political attention, despite the fact that it promotes conflict and hinders development.
- The problem is exacerbated when internal displacement continues over an extended period. If a large population group is denied the ability to exercise its basic as well as its civil rights for years, there are high costs and political risks for society as a whole.
- Internal displacement can have many causes. If it becomes a protracted phenomenon, this points to fundamental political shortcomings. Hence, the issue is a politically sensitive matter for the governments concerned, and many of them consider offers of international support as being undue interference in their internal affairs.
- At the global and regional levels, legislative progress has been made since the early 2000s. However, the degree of implementation is still inadequate and there is no central international actor to address the concerns of IDPs.
- The political will of national decision-makers is a prerequisite for the protection and support of those affected. This can be strengthened if governments are made aware of the negative consequences of internal displacement and if their own interests are appealed to.
- The German government should pay more attention to the issue of internal displacement and make a special effort to find durable solutions. The most important institutional reform would be to reappoint a Special Representative for IDPs who would report directly to the UN Secretary-General.

**SWP Research Paper**

*Anne Koch*

# On the Run in Their Own Country

Political and Institutional Challenges in the Context of Internal Displacement

**Stiftung Wissenschaft und Politik  
German Institute for  
International and Security Affairs**

SWP Research Paper 5  
May 2020, Berlin

**All rights reserved.**

© Stiftung Wissenschaft  
und Politik, 2020

SWP Research Papers are  
peer reviewed by senior  
researchers and the execu-  
tive board of the Institute.  
They are also subject to fact-  
checking and copy-editing.  
For further information  
on our quality control pro-  
cedures, please visit the  
SWP website: [https://  
www.swp-berlin.org/en/  
about-swp/quality-  
management-for-swp-  
publications/](https://www.swp-berlin.org/en/about-swp/quality-management-for-swp-publications/).  
SWP Research Papers reflect  
the views of the author(s).

**SWP**

Stiftung Wissenschaft und  
Politik  
German Institute  
for International  
and Security Affairs

Ludwigkirchplatz 3–4  
10719 Berlin  
Germany  
Phone +49 30 880 07-0  
Fax +49 30 880 07-200  
[www.swp-berlin.org](http://www.swp-berlin.org)  
[swp@swp-berlin.org](mailto:swp@swp-berlin.org)

ISSN 1863-1053  
doi: 10.18449/2020RP05

(Updated English version of  
SWP-Studie 04/2020)

## Table of Contents

<b>5</b>	<b>Issues and Recommendations</b>
<b>7</b>	<b>Why Is There a Need for Action?</b>
8	Displacement-specific Discrimination
8	Societal Costs
8	Conflict-promoting Potential
<b>10</b>	<b>Causes and Trends</b>
10	Triggers
15	Structural Drivers and Protracted Internal Displacement
<b>17</b>	<b>Case Studies: Ethiopia and Pakistan</b>
18	Reinforcement of Existing Urbanisation Trends
19	Shifts in Established Power Relations
20	Exacerbation of Societal Inequalities
<b>22</b>	<b>Political and Legal Regulatory Approaches</b>
22	Internal Displacement on the International Agenda
29	National Protection Instruments
<b>32</b>	<b>Perspectives and Scope for Action for International Engagement</b>
32	Prevention
33	Entry Points in the Case of Protracted Displacement
33	Durable Solutions
<b>35</b>	<b>Conclusion – Recommendations for German Policy</b>
<b>36</b>	<b>Abbreviations</b>

*Dr. Anne Koch is an Associate in the Global Issues Division at SWP.*

*This research paper was prepared within the framework of the research project “Forced Displacement, Migration and Development”, funded by the Federal Ministry for Economic Cooperation and Development (BMZ).*

## **On the Run in Their Own Country. Political and Institutional Challenges in the Context of Internal Displacement**

According to the United Nations High Commissioner for Refugees (UNHCR), 70.3 million people world-wide were fleeing wars and violent conflicts at the end of 2018. Nearly 60 per cent of these people were so-called internally displaced persons, that is, people who were forced to leave their homes without crossing an international border. Furthermore, a far greater number of people have been displaced due to natural disasters, climate change, large-scale development projects, and organised crime, but they remain in their own countries.

Internally displaced persons (IDPs) often have a similar need for protection as cross-border refugees, but they are not entitled to international protection. Despite the alarming figures, there is a lack of political attention being given to the problems arising from internal displacement. There are a number of reasons for this. Internal displacement occurs almost exclusively in poorer regions of the world. Unlike cross-border flight, it therefore does not directly affect wealthy states, which have a major influence on the international agenda. In addition, many affected states deny the existence or extent of internal displacement, since this exposes fundamental political deficits and failures on their part. Furthermore, reliable data is scarce and the quality is poor. Since the legal status of IDPs is no different from that of their fellow citizens, and because they often live scattered throughout the country, they remain statistically “invisible”.

For a long time, internal displacement was considered to be primarily a humanitarian challenge. In 1998, the United Nations (UN) published its UN Guiding Principles on Internal Displacement and expanded the prevailing view to include a human rights perspective. Although they are not legally binding, the Guiding Principles are nevertheless considered a milestone in the development of international standards of protection. There are now a variety of national and regional instruments for the protection of IDPs. However, the level of implementation remains deficient. The inadequacy of the measures taken so far is re-

flected in the data: The number of IDPs resulting from conflict has more than doubled since 1998.

This increase is not only due to new displacements. Equally relevant is the increasing duration of individual instances of displacement. If internal displacement becomes protracted, it is insufficient to cover only the basic material needs of those affected. In addition, access to education, livelihood opportunities, and political participation must be a priority. If this does not happen, there is a risk that the discrimination and marginalisation of large segments of the population will become permanent. In addition to individual human rights violations, structural challenges can arise: urbanisation trends intensify; demographic changes cause local or regional power structures to shift in ways that are likely to lead to conflict; and IDPs and host communities compete for resources. The resulting inequality can fuel conflicts and hamper development, thus hindering longer-term peace and reconstruction processes.

It is therefore inaccurate to view internal displacement as the unavoidable outcome of conflicts and disasters. Instead, protracted internal displacement points to deeper political distortions. When governments are unwilling or unable to meet their responsibilities to their own citizens, short-term emergencies create longer-term problems. Experiences of the past decades show that the challenges resulting from internal displacement can only be overcome with cooperation from the affected states. The central – but often missing – prerequisite for finding solutions is that the respective governments must acknowledge the problem.

This is where development-oriented arguments can make an important contribution. In essence, it is a matter of appealing to the self-interests of the affected governments. They must be made aware that internal displacement not only has negative implications for those directly affected, but that it also generates high costs for society as a whole, such as falling productivity levels, declining tax revenues, and political instability. Moreover, development policy offers the means for tackling the structural challenges associated with internal displacement.

Current efforts at the UN level to strengthen international cooperation through the Global Compact on Refugees (Global Refugee Compact) and the Global Compact for Safe, Orderly and Regular Migration (Global Migration Compact) exclude the phenomenon of internal displacement. This is symptomatic of the continuing contradictions between national sover-

eignty and an international responsibility to stand up for those in need of protection, and the resulting fragmentation of responsibilities at the international level. It is true that more and more humanitarian, human rights, and development-oriented actors are working to remedy internal displacement. However, there is a lack of flexible and multi-annual financial resources, and there is no central actor who can bring the various perspectives together and serve as a strong political advocate for IDPs in the UN system. In January 2020, a UN High-Level Panel on Internal Displacement was set up for one year to develop new approaches. This is a positive development. However, in order to bring about longer-term changes, this initiative should be transformed into a permanent state-led process under the aegis of a group of directly affected states.

For the international community, internal displacement is a challenge whose security and developmental impacts remain underestimated. The German government should give greater priority to this issue, both at the international level and in bilateral exchanges with the countries concerned. At the international level, it would be a step in the right direction if the Special Rapporteur on the Human Rights of Internally Displaced Persons were better funded and better staffed. However, the appointment of a Special Representative on Internal Displacement, who reports directly to the UN Secretary-General, would carry much more weight. Bilaterally, the German government should work to ensure that IDPs are systematically taken into account in national development plans; it should also invest in improved data collection and analysis, and make a concerted effort to find durable solutions.



# Why Is There a Need for Action?

The UN Guiding Principles on Internal Displacement (Guiding Principles) define IDPs as “persons or groups of persons who have been forced or obliged to flee or to leave their homes or place of habitual residence, in particular as a result of or in order to avoid the effects of armed conflict, situations of generalized violence, violations of human rights or natural or human-made disasters, and who have not crossed an internationally recognised State border”.<sup>1</sup> In contrast to the legal category of (cross-border) refugees that is enshrined in the 1951 Convention Relating to the Status of Refugees (Geneva Convention), the definition in the Guiding Principles is purely descriptive and does not establish a claim for international protection. The rights of IDPs are not special rights, but rather are derived from their status as citizens or residents of a state.<sup>2</sup> Therefore, the primary responsibility for their protection lies with the respective government.

The Internal Displacement Monitoring Centre (IDMC) estimates that 33.4 million new cases of internal displacement occurred in 2019.<sup>3</sup> Despite these high figures, the topic receives little attention. One of the reasons for this is poor data. However, political reasons are paramount. For wealthy Western states, internal displacement is not a pressing problem, as they are not directly affected by it. According to calculations by the World Bank, at the end of 2015, 99 per cent of all IDPs resulting from conflict were

in developing or emerging countries.<sup>4</sup> In contrast to cross-border displacement, wealthy regions of the world are also not directly exposed to the consequences of internal displacement. The level of political attention is correspondingly low. The annual ranking of “forgotten crises” published by the Norwegian Refugee Council shows that major displacement incidents which remain confined within the borders of the affected country are regularly neglected by the media. It also shows that the corresponding international appeals for assistance are especially underfunded.<sup>5</sup>

## Many governments deny that internal displacement occurs on their territory because they fear international sanctions or a loss of reputation.

Additionally, many governments deny that internal displacement occurs on their territory because they fear international sanctions or a loss of reputation. This is not only the case when state actors are directly involved in the displacement. Internal displacement due to natural disasters can also indicate a lack of state capacity to act, especially when displacement lasts for a long time and the situation of those affected becomes more permanent. Since the level of public interest in internal displacement is low and many governments do not admit that it exists in their country, the issue barely plays a role at the international level. This omission has far-reaching consequences. If state actors fail to fulfil their respon-

1 United Nations, *Guiding Principles on Internal Displacement. Introduction: Scope and Purpose*, E/CN.4/1998/53/Add.2, Annex, 11 February 1998, 5, <https://undocs.org/E/CN.4/1998/53/Add.2> (accessed on 4 March 2020).

2 Walter Kälin, *Guiding Principles on Internal Displacement. Annotations*, Studies in Transnational Legal Policy, no. 32 (Washington, D.C.: American Society on International Law, 2000), 2.

3 Internal Displacement Monitoring Centre (IDMC), *Global Report on Internal Displacement 2020* (Geneva, April 2020), 1.

4 World Bank, *Forcibly Displaced. Toward a Development Approach Supporting Refugees, the Internally Displaced, and Their Hosts* (Washington, D.C., 2017), 18.

5 Norwegian Refugee Council, *The World's Most Neglected Displacement Crises* (online), 5 June 2019, <https://www.nrc.no/shorthand/fr/the-worlds-most-neglected-displacement-crises/index.html> (accessed 16 October 2019).

sibility to protect IDPs, it is not only those directly affected who suffer. Society as a whole is confronted with additional costs and the threat of further conflicts, as well as the issue of onward movements across international borders.

## Displacement-specific Discrimination

Although IDPs have the same legal standing as fellow citizens who are not affected by displacement, in practice they are often barred from exercising their rights. For example, forced displacement rips people out of their professional and social environments, so that livelihood opportunities and access to state services such as education and health are lost. Often, the documents required to register children at school in their new place of residence or to exercise political rights such as participating in elections are missing. The same applies for accessing the legal system, making it difficult to sue for compensation payments or the recovery of property. Those affected are often traumatised and are also at increased risk of becoming victims of sexual or other forms of violence. If they do not have a permanent place of residence, they lack the planning horizon necessary to gain a foothold again professionally. In conflict regions, IDPs have on average much higher rates of infant mortality and malnutrition than cross-border refugees and other population groups affected by conflict.<sup>6</sup> Even if the security conditions allow for a return to the place of origin, the consequences of internal displacement are often long-lasting. This applies, for example, to cases where the original housing conditions were based on customary law or where property ownership was not sufficiently documented.

## Societal Costs

Recent research findings indicate that the economic costs of internal displacement can cancel out the developmental gains that individual countries have accrued over years or decades. The direct costs and losses resulting from internal displacement alone – such as loss of income and the cost of housing, health care, education, and security – account for a sub-

<sup>6</sup> See Centre for Research on the Epidemiology of Disasters, *People Affected by Conflict. Humanitarian Needs in Numbers* (Brussels, December 2013), 17.

stantial share of gross domestic product in some countries; in extreme cases, such as in the Central African Republic, it can be more than 10 per cent.<sup>7</sup> There are also long-term negative effects. This includes, for example, the fact that future income and tax revenues will be reduced, since the schooling of children and young people will be interrupted or shortened due to displacement. Poorer countries are particularly hard hit by this, because their inhabitants are more vulnerable from the outset, and the negative consequences of displacement are not cushioned by personal savings or state benefits.<sup>8</sup>

### Humanitarian actors have started to emphasise the developmental relevance of protracted internal displacement.

Such negative consequences are particularly serious in the case of protracted displacement or recurring cycles of displacement.<sup>9</sup> When people are displaced several times in quick succession – which is common both as a result of violent conflict and in areas with a high risk of flooding and earthquakes – each new instance of displacement causes further losses and burdens. Humanitarian actors have started to emphasise the developmental relevance of protracted internal displacement. They argue that an effective approach to the challenges arising from this is essential if the Sustainable Development Goals (SDGs) enshrined in Agenda 2030 are to be met.<sup>10</sup>

## Conflict-promoting Potential

The link between violent conflicts and internal displacement can be reciprocal: Internal displacement is not only a regular consequence of armed conflict, but it can also contribute to the geographical expansion

<sup>7</sup> Christelle Cazabat and Marco Tucci, *Unveiling the Cost of Internal Displacement* (Geneva: IDMC, February 2019), 6.

<sup>8</sup> *Ibid.*, 5.

<sup>9</sup> See Alexandra Bilak and Avigail Shai, “Internal Displacement beyond 2018: The Road Ahead”, *Forced Migration Review* 59 (2018): 49–51 (51).

<sup>10</sup> See Walter Kälin and Hannah Entwisle Chapuisat, *Breaking the Impasse. Reducing Protracted Internal Displacement as a Collective Outcome*, OCHA Policy and Studies Series (New York, NY: United Nations Office for the Coordination of Humanitarian Affairs [OCHA], 2017), 2.

or shifting of conflicts.<sup>11</sup> A number of mechanisms are at work here. When people in civil wars are displaced by state actors, those affected sometimes ally themselves with armed non-state actors. In other situations, they are defenceless against exploitation by such actors.<sup>12</sup> Case studies from Uganda and Darfur show that places with a high density of IDPs can serve as places of refuge or as weapons depots or recruitment areas for rebel groups.<sup>13</sup>

The relevant literature lists a number of possible factors that could also link disaster-induced internal displacement to an increase in violent conflict. These include competition for scarce resources, the forced coexistence of different ethnic groups, and growing discontent when governments fail to provide adequate support to populations affected by natural disasters.<sup>14</sup> However, a direct connection has not yet been proven empirically.<sup>15</sup> Beyond severe human rights violations, the interplay between internal displacement and violent conflicts has particularly serious consequences in terms of foreign and security policy if it destabilises countries in the long term and leads to cross-border movements.

**11** Heidrun Bohnet, Fabien Cottier and Simon Hug, “Conflict-induced IDPs and the Spread of Conflict”, *Journal of Conflict Resolution* 62, no. 4 (2018): 691–716.

**12** Sarah Kenyon Lischer, “Security and Displacement in Iraq”, *International Security* 33, no. 2 (2008): 95–119; Héloïse Ruaudel, *Armed Non-State Actors and Displacement in Armed Conflict* (Geneva: Geneva Call, 2013), 8–13.

**13** See Robert Muggah, “Protection Failures: Outward and Inward Militarization of Refugee Settlements and IDP Camps in Uganda”, in *No Refuge: The Crisis of Refugee Militarization in Africa*, ed. Robert Muggah (London: Zed Books, 2006), 89–136; Clea Kahn, *Conflict, Arms, and Militarization: The Dynamics of Darfur’s IDP Camps* (Geneva: Small Arms Survey, 2008), 35.

**14** Nils Petter Gleditsch, Ragnhild Nordås and Idean Salehyan, *Climate Change, Migration and Conflict: The Migration Link*, Coping with Crisis Working Paper Series (New York, NY: International Peace Academy, May 2007); Rafael Reuveny, “Climate Change-induced Migration and Violent Conflict”, *Political Geography* 26, no. 6 (2007): 656–73.

**15** Heidrun Bohnet, Fabien Cottier and Simon Hug, *Conflict versus Disaster-induced Migration. Similar or Distinct Implications for Security?* Paper Prepared for Presentation at the 55th ISA Annual Convention, Toronto, 26–29 March 2014.

# Causes and Trends

As with cross-border flight, internal displacement is caused by a combination of social, economic, and political drivers and acute triggers. Wars and violent conflicts, natural disasters, large infrastructure projects, and high rates of violent crime fall into the category of acute triggers. Poverty, marginalisation, and state discrimination are among the most important structural drivers. The triggers, in turn, can be divided into two categories: those that directly involve state actors and those that do not (see Table 1).<sup>16</sup> This distinction is relevant because the question of state involvement can influence how openly state authorities deal with internal displacement, and whether or not they accept external support.

## Triggers

Depending on the trigger, the quality of the available data on internal displacement varies. In principle, however, they are far less reliable than data on cross-border displacement. The available statistics are mostly projections of selectively collected data.

## Wars and Violent Conflicts

The best documented cases are internal displacements due to wars and violent conflicts. In addition to direct combat operations, the fear of being recruited into (para-)military units or the loss of sources of income due to conflict can also be reasons for displacement. In the course of a civil war, ethnic minorities are often disproportionately affected and are sometimes — as was the case during the Bosnian War of the early 1990s — actively displaced as part of an “ethnic cleansing”. Civil wars generally trigger larger waves of displacement

<sup>16</sup> The sharp dividing line between the two categories is purely schematic and cannot take into account the grey areas that actually exist: violent conflicts are also carried out by non-state actors, private companies are responsible for large infrastructure projects, and state actors are involved in criminal networks.

than wars between states.<sup>17</sup> A specific dilemma is particularly pronounced in the case of conflict-induced displacement: State actors are often directly or indirectly involved in displacement, but at the same time the state is also responsible for protecting its own citizens.<sup>18</sup> IDPs are particularly vulnerable in this situation because, unlike cross-border refugees, they are still on the territory of those responsible for their displacement, and no other authority is responsible for their protection.

## State actors are often involved in conflict-induced displacement.

Figure 1 (p. 13) shows that the number of IDPs resulting from conflict fluctuated moderately between an average of 20 to 25 million from 1990 up until 2012. Since 2013, there has been a sharp rise, to more than 40 million. This was largely caused by the Syrian civil war, but the number also reflects the unstable situations in Iraq, Yemen, and Libya. The almost uninterrupted increase in the total number of IDPs due to conflict since the end of the 1990s cannot, however, be attributed solely to the new displacements that occur every year. Another reason is that durable solutions are found only for a minority of IDPs. As a result, the duration of individual instances of displacement steadily increases, meaning that the group of people affected grows from year to year.<sup>19</sup>

According to recent surveys, there are conflict-induced IDPs in 61 countries world-wide.<sup>20</sup> However,

<sup>17</sup> See World Bank, *Forcibly Displaced* (see note 4), 45. A current example is Syria, which with 6.6 million IDPs is currently the most severely affected country.

<sup>18</sup> See Adam G. Lichtenheld, “Explaining Population Displacement Strategies in Civil Wars: A Cross National Analysis” (to be published in *International Organization* in 2020).

<sup>19</sup> See Kälén and Chapuisat, *Breaking the Impasse* (see note 10), 16.

<sup>20</sup> See IDMC, “2019 Internal Displacement Figures by Country”, *Global Internal Displacement Database*, <https://www.internal-displacement.org/database/displacement-data> (accessed 3 May 2020).

Table 1

**Causes of internal displacement – a typology**

	<i>Direct state participation</i>	<i>No direct state participation</i>
<i>Triggers</i>	Wars and violent conflicts  Large development and infrastructure projects	Natural disasters and slow-onset environmental changes  Organised crime
<i>Drivers</i>	Poverty Societal marginalisation Structural discrimination	

for years a small group of states has been responsible for the vast majority of these cases. For example, at the end of 2019, more than three-quarters of all conflict-induced IDPs were in just 10 countries, at least 6 of which – Syria, Colombia, the Democratic Republic of Congo, Nigeria, Sudan, and Iraq – have been among the 10 most-affected countries for at least five years (see Figure 2, p. 13).

The geographic overview in Figure 2 makes it clear that, aside from in war zones, conflict-induced internal displacement occurs predominantly in states with weak governance structures. The significant overlap with the main countries of origin of cross-border refugees also indicates that, in cases of displacement, there is often a continuum between internal and cross-border movements: Syria, Afghanistan, Somalia, the Democratic Republic of Congo, and Sudan are among the 10 most-affected countries in both categories. From a development perspective, another category of countries is of particular interest: those that are both affected by internal displacement and host large numbers of cross-border refugees from other countries. Sudan and Ethiopia, for example, are among the 10 most-affected countries world-wide in these two categories.<sup>21</sup> In Latin America, the Venezuelan refugee crisis threatens to destabilise Colombia.

### **Natural Disasters and Slow-Onset Environmental Changes**

Internal displacement resulting from environmental changes is referred to as “disaster displacement”. This category includes displacement due to sudden-onset

natural disasters such as hurricanes, floods, tsunamis, earthquakes, volcanic eruptions, and forest fires, as well as forced relocation as a result of gradual environmental changes such as desertification or sea-level rise.<sup>22</sup> So far, statistics have primarily been collected on displacements resulting from sudden-onset disasters. The available data show that, every year, far more people leave their homes as a result of natural disasters than as a result of wars and violent conflicts, and that high numbers also occur in wealthy countries such as the United States. Disaster-induced displacement is subject to greater fluctuations than conflict-induced displacement (see Figure 3, p. 14).

These strong annual fluctuations can be explained by the fact that violent conflicts gradually spread and intensify, whereas natural disasters are distinct events that cause many people to flee at a given time. In 2010, for example, floods in just two countries – China and Pakistan – forced 26.2 million people to leave their homes. This was significantly more than the total number of all disaster-induced internal displacements in 2011, a year in which there were no natural disasters of comparable dimensions.<sup>23</sup> However, the apparent fatefulness of disaster-induced displacement often masks deeper structural disparities. Members of poor and marginalised groups, for example, are more likely to settle in flood-prone areas, live in dwellings that are not earthquake-proof, and have no reserves that would allow them to survive climate-related crop failures.<sup>24</sup>

<sup>21</sup> United Nations High Commissioner for Refugees (UNHCR), *Global Trends. Forced Displacement in 2018* (Geneva, June 2019), 17.

<sup>22</sup> For a typology of relevant environmental changes, see IDMC, *Displacement Due to Natural Hazard-induced Disasters. Global Estimates for 2009 and 2010* (Geneva, June 2011), 7.

<sup>23</sup> *Ibid.*, 13.

<sup>24</sup> IDMC, *Global Report on Internal Displacement 2019* (Geneva, May 2019), 83.

## Data gaps

Geneva-based IDMC brings together all available data on internal displacement, making it the authoritative source for up-to-date statistics in this area. Nevertheless, the available data remain patchy. The reasons for this are manifold. On the one hand, many IDPs do not appear in the official surveys because they are scattered throughout the country and are difficult to distinguish from other poor population groups. On the other hand, the question of who is counted as an IDP depends on the national context. For example, whereas in some countries the children of IDPs are not included in the statistics, in others the status of IDP is “inherited” by the next generation – even if the original IDPs are already locally integrated or have settled permanently.<sup>a</sup> Moreover, especially in countries with weak social security systems, the support services provided for IDPs may encourage people who are not affected by displacement to register.<sup>b</sup> Finally, statistics on internal displacement always have a political dimension and are therefore used for political purposes. For example, affected governments present declining figures to demonstrate their ability to act or to prove that an internal conflict is under control. High figures, on the other hand, serve to maintain territorial claims or signal the need for support.

There is a lack of standardised survey methods on internal displacement and no consensus on when internal displacement is considered to have ended. To remedy this situation, the UN Statistical Commission (UNSC) established an Expert Group on Refugee and Internally Displaced Persons Statistics (EGRIS) in 2016 to develop a comprehensive statistical framework on internal displacement.<sup>c</sup> The Joint Data Center on Forced Displacement, co-founded by UNHCR and the World Bank in October 2019, also focusses on improving the quality and availability of data on internal displacement.

**a** See Zara Sarzin, *Stocktaking of Global Forced Displacement Data*, Policy Research Working Paper no. 7985 (Washington, D.C.: World Bank Group, February 2017), 14.

**b** See UN Ukraine, “Pensions for IDPs and Persons Living in the Areas Not Controlled by the Government in the East of Ukraine”, Briefing Note, February 2019, 1.

**c** In March 2020, UNSC adopted the International Recommendations on IDP Statistics proposed by EGRIS. See <https://unstats.un.org/unsd/statcom/51st-session/documents/BG-item-3n-international-recommendations-on-IDP-statistics-E.pdf> (accessed 20 April 2020).

Like conflict-induced displacement, the bulk of disaster-induced displacement is concentrated in a small group of countries. In 2019, for example, more

than 80 per cent of the new cases arising were from just 10 countries. Most of these are located in South-East Asia and the Pacific, as many countries in these regions are affected by seasonal storms and flooding.<sup>25</sup> A number of countries have high rates of both conflict-induced and disaster-induced internal displacement. In Africa these include Ethiopia, Niger, Nigeria, South Sudan, and Sudan, and in Asia include Afghanistan, Bangladesh, India, and the Philippines.<sup>26</sup>

## Large Development and Infrastructure Projects

Large-scale projects designed to promote the economic development of a country often involve the resettlement of certain population groups. This is a relatively well-documented phenomenon in the construction of dams. Especially in India and China, entire regions have been flooded.<sup>27</sup> Urban renewal initiatives, mining projects, and infrastructure projects such as the construction of railway lines may also mean that people have to leave their homesteads. Reliable figures do not exist, but estimates suggest that 10 to 15 million people are affected every year.<sup>28</sup> Particularly in strongly affected countries, government agencies refuse to categorise this form of migration as internal displacement, as it is deemed to be an inevitable outcome of modernisation efforts and because, ideally, a balance has been struck between the interests of the affected residents and the interests of the population as a whole.<sup>29</sup>

**25** The countries with the highest number of new disaster-related internal displacement cases in 2019 were: India (5,018,000), the Philippines (4,094,000), Bangladesh (4,086,000), China (4,034,000), United States (916,000), Iran (520,000), Mozambique (506,000), Ethiopia (504,000), Somalia (479,000) and Indonesia (463,000).

**26** See IDMC, “2019 Internal Displacement Figures by Country” (see note 20).

**27** World Bank, *Resettlement and Development. The Bankwide Review of Projects Involving Involuntary Resettlement 1986–1993*, Environment Department Papers, no. 32 (Washington, D.C., March 1996).

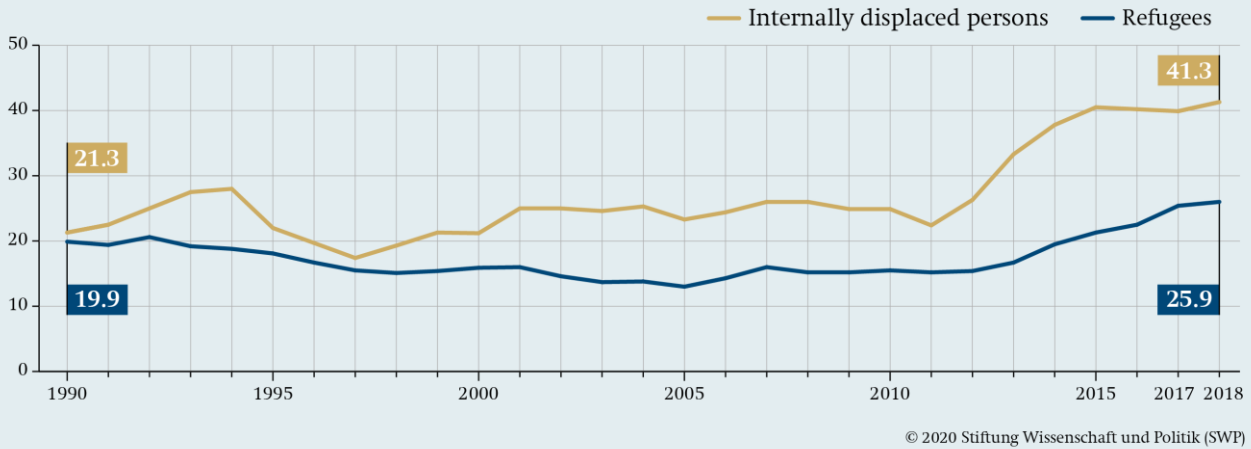
**28** Nadine Walicki, Michael J. Ioannides and Bryan Tilt, *Dams and Internal Displacement. An Introduction*, Case Study Series (Geneva: IDMC, April 2017), 2.

**29** See Nadine Walicki, *Expert Roundtable on Displacement Caused by Development. Event Summary* (Geneva: IDMC, August 2017), 6.



Figure 1

**Conflict-induced internal versus cross-border displacement**  
*In millions of persons*

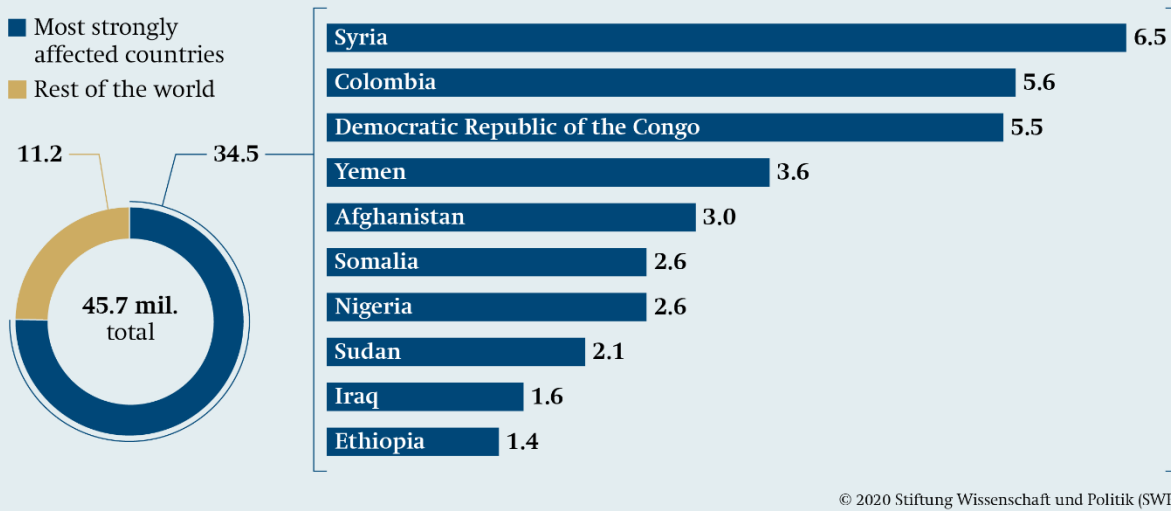


In 2019, the number of conflict-induced IDPs increased to 45.7 million (see IDMC, *Global Report on Internal Displacement 2020* [Geneva, April 2020], 2). The number of conflict-induced refugees in 2019 was not available at the time of publication.

Source: IDMC

Figure 2

**Geographic distribution of conflict-induced internally displaced persons**  
*In millions of persons, end of 2019*

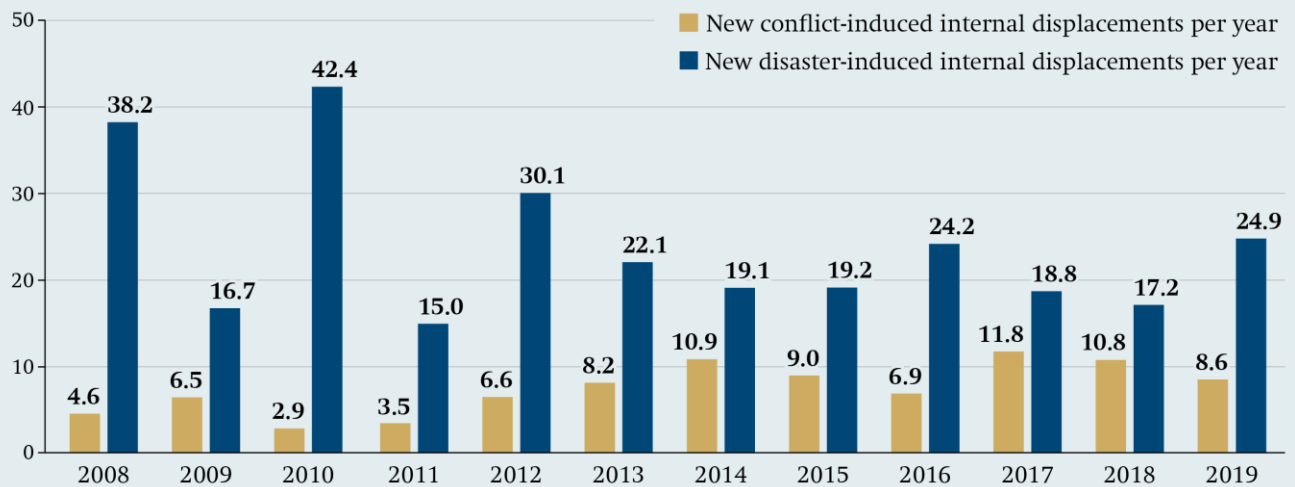


Source: IDMC

Figure 3

### New internal displacements per year

In millions of persons



© 2020 Stiftung Wissenschaft und Politik (SWP)

Source: IDMC

Indeed, there are relevant differences between conflict- and disaster-induced internal displacements. Extensive development projects go through a planning phase; the necessary relocations are therefore announced in advance. This allows for an orderly process, and the state or the respective executing agency can make compensation payments or provide new accommodations. Nevertheless, resettlement can constitute a form of displacement if it takes place under duress or if there is no adequate compensation. Like other types of internal displacement, this mostly affects poor and marginalised population groups who are not able to influence political decisions in their favour. This is the case, for example, when urban slums are cleared to make room for expensive new housing, or when indigenous populations are forced to leave their ancestral lands to allow for the exploitation of mineral resources. In addition, particularly disadvantaged people often have no formal land titles or cannot refer to land registry entries and are therefore sometimes evicted from their accommodations without compensation.

### Organised Crime

Under certain conditions, organised crime also leads to displacement.<sup>30</sup> In some Latin American countries, such as Honduras and El Salvador, the number of violent crimes is so high, and the negative effects of gang crime so serious, that a substantial part of the population feels compelled to move.<sup>31</sup> IDMC estimates that at least 432,000 people in the Northern Triangle of Central America were affected by this at the end of 2017.<sup>32</sup> Often these are individuals or individual families, so the phenomenon is even less visible than

<sup>30</sup> The line between violent conflicts and organised crime is not always clear. In Colombia, for example, these two causes of displacement are intertwined. See Adriaan Aalsema, "Colombia Has Highest Number of Internally Displaced People", *Colombia Reports*, 19 June 2018, <https://colombiareports.com/colombia-has-highest-number-of-internally-displaced-people/> (accessed on 10 December 2019).

<sup>31</sup> David James Cantor, "The New Wave: Forced Displacement Caused by Organized Crime in Central America and Mexico", *Refugee Survey Quarterly* 33, no. 3 (2014): 34–68.

<sup>32</sup> See IDMC, "Understanding and Estimating Displacement in the Northern Triangle of Central America" (Geneva, September 2018), <http://www.internal-displacement.org/research-areas/criminal-violence> (accessed 16 October 2019).



other forms of displacement.<sup>33</sup> This variant, too, usually affects poor population groups, which do not have the necessary resources to protect themselves from violent crimes, and it indicates that the state has not fulfilled its duty to protect its own citizens.

## The Role of International Actors

Since internal displacement occurs predominantly in developing countries, the fact that wealthy states also actively contribute to the phenomenon is often overlooked. Some of them finance dubious infrastructure and agricultural projects, fuel local conflicts, or send rejected asylum seekers or temporarily vulnerable persons back to places where they become internally displaced.<sup>34</sup> The legal framework of the global refugee regime also has a direct impact on internal displacement, as many countries apply the principle of the “internal flight alternative” in their asylum procedures: They only grant people access to international protection under the Geneva Convention if they can prove that they could not find safety elsewhere in their country of origin.<sup>35</sup> In these instances, internal displacement is legally considered the preferred alternative to cross-border flight.<sup>36</sup>

## Structural Drivers and Protracted Internal Displacement

When comparing the different scenarios in which internal displacement occurs, it becomes clear that – although the above-mentioned triggers are ultimately determinative for the relocation of individual persons – pre-existing economic, social, or political disadvantages have a major influence on which population groups are most affected. These structural

drivers increase the risk of displacement in two ways. On the one hand, poor and marginalised population groups are more vulnerable to displacement for several reasons: Members of such groups often settle in areas that are threatened by natural disasters or riven by organised crime. Furthermore, they often lack the reserves to bridge periods of scarcity caused by climatic or economic factors. It also often happens that state authorities do not protect them from displacement by private actors.<sup>37</sup> On the other hand, they find it particularly difficult to overcome disadvantages resulting from their displacement. They are therefore disproportionately affected by protracted displacement (see text box).

In contrast to temporary displacement, protracted internal displacement is not an inevitable consequence of conflicts or natural disasters, but – at least in part – the product of fundamental political failures and deficiencies. This weakens the previously introduced distinction between internal displacement that does involve and that which does not involve the participation of state actors. Since the primary responsibility for the protection of IDPs lies with the state authorities of their respective home country, protracted displacement indicates that the state has failed in this respect, regardless of the original trigger of the displacement. Therefore, the risk of protracted displacement is particularly high in countries characterised by social inequality, ethnic tensions, and weak institutions. Often, as in Afghanistan and the Democratic Republic of the Congo, there are several large waves of displacement over the course of decades, which, although they have different triggers in individual cases, can jointly be attributed to a “permanent crisis of statehood”.<sup>38</sup> Structural discrimination in these cases manifests in the lack of state support to overcome the disadvantages suffered in the course of the original displacement. The extent of state support for IDPs often depends on how much political capital national authorities can draw from this commitment. People in geographically and politically remote parts of the country, as well as politically unpopular groups and ethnic minorities, often lose out. Besides state

<sup>33</sup> IDMC, *Global Report on Internal Displacement 2016* (Geneva, May 2016), 45.

<sup>34</sup> IDMC, *Mini Global Report on Internal Displacement 2017* (Geneva, May 2017), 27f.

<sup>35</sup> See Elizabeth Ferris, “Internal Displacement and the Right to Seek Asylum”, *Refugee Survey Quarterly* 27, no. 3 (2008): 76–92.

<sup>36</sup> See Chloe Sydney, “Internal Displacement Is Not an Acceptable Alternative to International Protection”, IDMC Expert Opinion, March 2020, <https://www.internal-displacement.org/expert-opinion/internal-displacement-is-not-an-acceptable-alternative-to-international-protection> (accessed 20 April 2020).

<sup>37</sup> In Colombia, for example, women, children, and ethnic minorities make up a disproportionately large share of all IDPs; see James M. Shultz et al., “Fifteen Distinguishing Features”, *Disaster Health* 2, no. 1 (2014): 13–24 (13f.).

<sup>38</sup> Katy Long, *Permanent Crises? Unlocking the Protracted Displacement of Refugees and Internally Displaced Persons* (Oxford: Refugee Studies Centre, October 2011).

## Protracted Displacement

The term “protracted displacement”, introduced at the end of the 2000s, has fundamentally changed the political debate on internal displacement. The determining criterion for describing a displacement as “protracted” is not its duration, but rather whether any progress towards durable solutions is discernible, or whether the situation is becoming engrained.<sup>a</sup> This perspective also changes the assessment of humanitarian aid operations in cases of displacement by drawing attention to the deficits of an understanding of protection that is limited to “care and maintenance”. This narrow understanding of protection can lead to scenarios whereby those affected become permanently dependent on aid programmes and transfer payments.<sup>b</sup>

**a** IDMC, *IDPs in Protracted Displacement: Is Local Integration a Solution?* Report from the Second Expert Seminar on Protracted Internal Displacement, 19–20 January 2011 (Geneva, May 2011), 7.

**b** Center on International Cooperation, *Addressing Protracted Displacement: A Framework for Development-Humanitarian Cooperation* (New York, NY, December 2015), 6f.

weakness and the political neglect of affected population groups, repression by authoritarian governments can also perpetuate internal displacement. For example, state actors sometimes prevent people who left their homes due to natural disasters from returning, so that short-term, disaster-induced displacement is transformed into longer-term displacement perpetuated by the state.<sup>39</sup>

<sup>39</sup> Ibid., 6.

## Additional data requirements

Total figures give a first impression of the extent of internal displacement. However, they have only limited practical use, since the support needs of those concerned vary according to the context. A more detailed assessment of the conditions in which IDPs live in the various countries and regions is needed in order to distribute the available resources sensibly and to develop appropriate recommendations for action. This is where a recent IDMC initiative comes in that assesses the severity of displacement in different countries and regions in eight issue areas:<sup>a</sup> (1) security, (2) income opportunities, (3) housing, (4) basic public services, (5) access to documents, (6) family reunification, (7) political participation, and (8) access to the legal system.<sup>b</sup> This new frame of reference offers helpful starting points for the work of development actors in particular. However, the planning and implementation of the appropriate assistance requires further information, ideally in the form of disaggregated data that reflect the socio-demographic structure of IDPs and their specific needs. This is time-consuming and costly, but it forms an important foundation for targeted programming.

Since many affected governments are unwilling to deal with internal displacement, scientists are faced with a kind of chicken-and-egg problem when collecting data: Reliable data are necessary to make the problem visible and to bring it into the public domain. At the same time, however, the governments concerned would first have to acknowledge that there is internal displacement. As long as they deny this, they will not provide the financial and administrative resources necessary for data collection and analysis.

**a** IDMC, *Impact and Experience. Assessing Severity of Conflict Displacement. Methodological Paper* (Geneva, February 2019).

**b** These sub-sectors meet the criteria of the Framework on Durable Solutions for Internally Displaced Persons developed by the Inter-Agency Standing Committee (IASC) of the United Nations (see the section on “Political and Legal Regulatory Approaches” in this paper, p. 22).

# Case Studies: Ethiopia and Pakistan

Large-scale displacement not only leads to high personal costs, but also to structural changes. Typical consequences include increased urbanisation, a shift in traditional power relations, and an exacerbation of social inequalities. Ethiopia and Pakistan are useful case studies for illustrating these different trends, since both countries have been affected by different forms of internal displacement for decades and have experienced far-reaching economic, political, and social impacts.

*Ethiopia's* history is marked by recurring waves of displacement. The politically motivated denial of internal displacement also has a long history. Both Haile Selassie's regime and the subsequent Derg military regime in the 1970s and 1980s feared reputational damage as a result of large-scale displacement caused by mismanagement and famine. In the course of the economic upswing since the turn of the millennium, Ethiopia has embarked upon a number of large and prestigious infrastructure projects. In this context, the government resettled many citizens without taking into account the social costs of such measures. The routine denial of there having been expulsions – particularly those caused by conflict and development – was a permanent feature of Ethiopian politics until very recently. As a result, for a long time international actors were only able to provide very limited support to those affected.<sup>40</sup> This changed when the new prime minister, Abiy Ahmed, took office in May 2018. The Ethiopian government now acknowledges the existence of conflict-induced internal displacement, it seeks support from aid orga-

<sup>40</sup> See Mehari Taddele Maru, *Causes, Dynamics, and Consequences of Internal Displacement in Ethiopia*, Global Issues Division, Working Paper (Berlin: Stiftung Wissenschaft und Politik, May 2017).

nisations, and it engages constructively in international discussions on improvements in this area.<sup>41</sup>

## **The political opening in Ethiopia under Ahmed coincided with a rapid increase in new displacements.**

However, the political opening under Ahmed coincided with a rapid increase in new displacements. In addition to 296,000 displacements due to natural disasters such as droughts and floods, Ethiopia experienced 2,895,000 new conflict-induced displacements in 2018, the highest number world-wide.<sup>42</sup> The causes were mostly social and ethnic tensions that had existed for a long time and were kept under control by the previous authoritarian government; in the context of the newly created political freedoms, these tensions have been increasingly unleashed in violent conflicts.<sup>43</sup> Overcoming this problem is a monumental task for Ahmed's government. The national Durable Solutions Initiative for IDPs, launched in December 2019, is a step in the right direction, so long as it respects the freedom of choice of those affected and does not push them to return prematurely.

Since *Pakistan's* founding in 1947, migration and expulsion have shaped the country's history. Between 2010 and 2015 alone, around 1.5 million people had to leave their homes due to natural disasters – mainly

<sup>41</sup> Mark Yarnell, "Ethiopia: Abiy's Misstep on IDPs and How He Can Fix It", *African Arguments* (online), 24 October 2018, <https://africanarguments.org/2018/10/24/ethiopia-idps-abiy-misstep-fix/> (accessed 14 October 2019).

<sup>42</sup> IDMC, *Global Report on Internal Displacement 2019* (see note 24).

<sup>43</sup> Human Rights Watch, "Ethiopia: Abiy's First Year as Prime Minister. Review of Conflict and Internally Displaced Persons", 9 April 2019, <https://www.hrw.org/news/2019/04/09/ethiopia-abiy-first-year-prime-minister-review-conflict-and-internally-displaced> (accessed 16 October 2019).

floods and earthquakes.<sup>44</sup> Violent conflicts in the past have also regularly caused large waves of displacement. The FATA region (Federally Administered Tribal Areas), a semi-autonomous region in north-west Pakistan until its merger with the neighbouring province of Khyber Pakhtunkhwa in 2018, was particularly affected. It is considered to be a place of origin and retreat for terrorist militias, which the Pakistani army has repeatedly attempted to combat with major military offensives. During the Zarb-e-Azb offensive, which started in June 2014, more than 900,000 people were forced to leave their home regions within the first month.<sup>45</sup>

State authorities support different groups of Pakistani IDPs to very different degrees. Since 2007, assistance to people who have been forced to leave their homes because of natural disasters has been coordinated by a network of regional disaster management authorities and is relatively well-organised. But there is no institution that takes care of those who have been displaced by conflict. In recent years, IDPs from the FATA region in particular have suffered from this deficit. In addition, the Pakistani government, concerned for its reputation, was anxious to cover up the extent of the fighting and displacement in the region, and therefore did not launch a humanitarian appeal.<sup>46</sup>

## Reinforcement of Existing Urbanisation Trends

Urbanisation is considered a megatrend of the 21st century.<sup>47</sup> Displacement, both internal and cross-

border, is also increasingly becoming an urban phenomenon.<sup>48</sup> This puts a burden on the infrastructure of affected cities, poses security risks, and creates social challenges. In Pakistan — a country already marked by rapid urbanisation — many IDPs have moved to the cities in recent years due to family networks or in search of income opportunities.<sup>49</sup> This is particularly true of Karachi, the economic centre of the country, as well as the provincial capital Peshawar, whose population almost doubled between 1998 and 2013, from 1.7 to 3.3 million.<sup>50</sup> In both cities, the already inadequate education and health care systems were not prepared for the high level of immigration; the water and energy supplies are equally inadequate. This competition for scarce resources leads to resentment among the local population towards newcomers, thereby fuelling social tensions. Thus, the competition for housing is intensifying, and the poorest population groups are being pushed to the periphery of the cities. In addition, new security risks arise because the Taliban use Karachi as a place of retreat and to recruit new fighters. At the same time, IDPs from the FATA region are experiencing further disadvantages, as they are sometimes perceived as Taliban allies and are therefore subject to increased state controls. The consequences are restrictions on their freedom of movement and discrimination when looking for work.<sup>51</sup>

In Ethiopia, where current calculations show that 86.8 per cent of the population lives in rural areas, internal displacement and urbanisation are less strongly linked than in Pakistan. Nevertheless, IDPs

<sup>44</sup> See IDMC, *Global Report on Internal Displacement 2016* (see note 33), 26. In its annual reports, IDMC regularly emphasises that the data available for Pakistan on internal displacement is inadequate, since it only takes into account those affected in the former FATA region.

<sup>45</sup> Sohail Ahmad, Sadia Sohail and Muhammad Shoab Malik, “Displacement from FATA Pakistan (2009 – 2016): Issues and Challenges”, *Global Regional Review* 1, no. 1 (2016): 48 – 60 (50).

<sup>46</sup> “PM Has Given Clear Instructions Not To Seek External Assistance: FO”, *The Express Tribune* (online), 10 July 2014, <https://tribune.com.pk/story/733684/pm-has-given-clear-instructions-not-to-seek-external-assistance-fo/> (accessed 18 February 2020).

<sup>47</sup> See United Nations, Department of Economic and Social Affairs, *World Urbanization Prospects: The 2018 Revision* (New York, NY, 2019), 1.

<sup>48</sup> Nadine Biehler and David Kipp, *Alternatives to Refugee Camps. Cities Need International Support for Receiving Forcibly Displaced People*, SWP Comment 49/2019 (Berlin: Stiftung Wissenschaft und Politik, December 2019), 2; IDMC, *Global Report on Internal Displacement 2019* (see note 24), 77.

<sup>49</sup> Michael Kugelman, *Urbanisation in Pakistan: Causes and Consequences*, NOREF Expert Analysis (Oslo: Norwegian Peacebuilding Resource Centre [NOREF], January 2013), 2f.; IDMC, *Pakistan: Solutions to Displacement Elusive for Both New and Protracted IDPs* (Geneva, 24 August 2015), 7.

<sup>50</sup> Irina Mosel and Ashley Jackson, *Sanctuary in the City? Urban Displacement and Vulnerability in Peshawar*, Humanitarian Policy Group Working Paper (London: Overseas Development Institute [ODI], May 2013), 12.

<sup>51</sup> Gabriel Domínguez, “Pakistan’s Urbanization: ‘A Challenge of Great Proportions’”, interview with Michael Kugelman, *Deutsche Welle* (online), 30 December 2014, <https://www.dw.com/en/pakistans-urbanization-a-challenge-of-great-proportions/a-18163731> (accessed on 14 October 2019).

constitute an above-average proportion of the urban population: 21 per cent of those affected live in cities or peri-urban areas, compared with 13.2 per cent of the total population.<sup>52</sup> In both countries considered here, internal displacement contributes to slum development. In turn, the housing situation in slums often carries an increased risk of disaster-induced displacement.<sup>53</sup>

Increasing levels of urbanisation, however, not only bring disadvantages but also create opportunities. If IDPs are supported in their entrepreneurial endeavours, they too can make positive contributions. For example, they can strengthen trade relations within the country.<sup>54</sup> Particularly in the case of protracted internal displacement, it is unlikely that displaced persons will return to rural areas. It is therefore important to recognise the long-term demographic changes resulting from internal displacement at an early stage and to take them into account in urban planning processes. This is the best means for meeting the challenges of displacement in urban areas.<sup>55</sup> Support from international actors can be helpful here. It is beyond the competence of humanitarian actors to adapt complex urban systems to the demands of rapid immigration. The necessary expansion of public services and material infrastructure can only succeed in close coordination with the respective city administration. It is therefore usually a task for development actors.

## Shifts in Established Power Relations

Civil wars often result in the expulsion of minorities, sometimes, as in the Bosnian War, with the explicit aim of ethnic segregation. However, internal displacement due to rampant, omnipresent violence or natural disasters also carries the risk, especially in multi-ethnic societies, that the power relations which have been balanced over years and decades may be called into question, thus fuelling conflict.<sup>56</sup>

The federal system of Ethiopia has been organised along ethnic lines since 1991. Six of the nine federal states that make up the country as a whole, namely Afar, Amhara, Harar, Oromia, Somali, and Tigray, are each dominated by a different ethnic group. The remaining three are more ethnically mixed. Even though the central government, which was clearly authoritarian until the change of government in 2018, has great power, this federal structure allows for a certain degree of self-government and cultural autonomy. However, the federal system by no means fully reflects the diversity of Ethiopia's multi-ethnic society. Moreover, the political participation levels of the groups that dominate the individual states are not equal, since some of them participate in the central government while others do not. The system as a whole is fragile because, among other things, migration movements within the country disturb the coherence of ethnically dominated regions. Border disputes and land conflicts regularly lead to internal displacement in Ethiopia. In 2018 and 2019, for example, there were violent clashes both within Oromia and Harar, on the borders between Oromia and Somali, and between Amhara and Tigray, as a result of which many people were displaced.<sup>57</sup> The origins of some of these conflicts lie in previous state resettlement programmes, during the implementation of which traditional land rights were ignored.<sup>58</sup>

Pakistan is also a federal state, but its political system is less strictly organised along ethnic lines compared to Ethiopia. Nevertheless, the displacement of population groups has brought about demographic changes in individual regions and thus has called existing power relations into question. This can be illustrated by the example of Karachi, Pakistan's capital from the founding of the state in 1947 to 1959, and today the country's leading economic metropolis and the capital of Sindh province. As a result of the violent riots that accompanied the par-

lines, see inter alia James D. Fearon, "Ethnic Mobilization and Ethnic Violence", in *The Oxford Handbook of Political Economy*, ed. Barry R. Weingast and Donald Wittman (Oxford: Oxford University Press, 2006), 852–68.

<sup>57</sup> Human Rights Watch, "Ethiopia: Abiy's First Year as Prime Minister" (see note 43); IDMC, *Global Report on Internal Displacement 2019* (see note 24), 14.

<sup>58</sup> See Markos Ezra, *Ecological Degradation, Rural Poverty, and Migration in Ethiopia: A Contextual Analysis*, Policy Research Division Working Paper no. 149 (New York, NY: Population Council, 2001); Maru, *Causes, Dynamics, and Consequences of Internal Displacement in Ethiopia* (see note 40), 7.

<sup>52</sup> International Organization for Migration (IOM), *Internal Displacement in Urban and Rural Areas. An Analysis of IDP Distribution and Access to Services in Nigeria and Ethiopia* (Geneva, May 2019), 11–13.

<sup>53</sup> IDMC, *Global Report on Internal Displacement 2019* (see note 24), 84f.

<sup>54</sup> *Ibid.*, 91.

<sup>55</sup> *Ibid.*, 101.

<sup>56</sup> Ethnic diversity is not per se a source of conflict, but conflict parties often mobilise their supporters along ethnic



tition of India after independence from the British Empire, many Muslim refugees (the Mohajirs) from India settled in Karachi. Decades later, the Pakistani military government under Mohammed Zia-ul-Haq mobilised this group to create a counterweight to the Pakistan Peoples Party (PPP), which had its stronghold in Sindh. This led to the founding of the Muttahida Qaumi Movement (MQM) in the mid-1980s, a political party that initially fought for the rights of the Mohajirs and their descendants. The MQM proceeded to become an important opponent of the PPP in Karachi and in Sindh province.

Due to its economic attractiveness, Karachi also became the largest Pashtun city outside the traditional Pashtun settlement areas in the north-west. From 2007 onwards, the moderate Awami National Party (ANP) developed into the political mouthpiece of the Pashtun middle class in Karachi. The concern of the established parties about a further strengthening of the ANP resulted in prejudice against Pashtun IDPs seeking refuge in Karachi.<sup>59</sup> Ultimately, however, the ANP did not succeed in becoming a decisive force in Karachi. One important reason for this was that their representatives were deliberately threatened by Taliban supporters in the early 2010s and became victims of attacks.<sup>60</sup>

## Exacerbation of Societal Inequalities

Displacement not only brings about new human rights violations. Often, long-standing patterns of disadvantage and marginalisation are perpetuated and reinforced. In Pakistan, IDPs from the former FATA region are discriminated against, for example when looking for work.<sup>61</sup> They are also being urged

to return to areas that are no longer officially classified as conflict areas, but in which water and electricity supplies, as well as access to education and health, are still not guaranteed.<sup>62</sup> However, there are other forms of structural disadvantage. For example, people who had lost their homes due to the major floods in 2010 had to present a machine-readable identity card in order to receive financial support. Yet, since most Pakistani women are not registered under their own names but only as family members of a male relative, it was particularly difficult for single or widowed women to access these support services.<sup>63</sup> Another disadvantaged group of IDPs were agricultural workers, who were quasi-feudally dependent on landowners and also had to leave their homes because of the floods. Some of the poorest among them reportedly did not return to their homes, fearing that they themselves would have to pay for the costs of the crop failure, and thus fall into debt bondage.<sup>64</sup>

In Ethiopia, on the other hand, poor population groups are especially affected by government resettlement programmes. In the course of the modernisation and expansion of the capital, slum dwellers and the rural population from the immediate vicinity of Addis Ababa in particular are being resettled. Many of those affected lose access to sources of income.<sup>65</sup> It also happens time and again that state resettlement programmes violate the rights of host communities. Pastoralists, that is, shepherds who practise extensive natural grazing, are particularly affected by this. Since their land rights are often not formally documented, the areas they use are considered potential

59 Tayyab Ali Shah, "Fresh Violence Threatens to Make Karachi the New Mogadishu", *The Jamestown Foundation Terrorism Monitor* (online), 4 February 2011, <https://jamestown.org/program/fresh-violence-threatens-to-make-karachi-the-new-mogadishu/>; "ANP Critical of Government Decision to Stop IDPs from Entering Karachi", *AAJ News* (online), 24 May 2009, <http://www.aaj.tv/english/national/anp-critical-of-government-decision-to-stop-idps-from-entering-karachi/> (accessed 19 February 2020).

60 Sartaj Khan, "Karachi's Great Middle Class Pashtun Hope", *The Friday Times* (online), 6 October 2017, <https://www.thefridaytimes.com/karachis-great-middle-class-pashtun-hope/> (accessed 19 February 2020).

61 Waqqas Mir, "State Authorities Fail Citizens", *Development and Cooperation* (online), 4 February 2016, <https://www.dandc.eu/en/article/pakistan-violates-rights-internally-displaced-people> (accessed 18 February 2020).

62 Zulfikar Ali, "IDPs Unwilling to Return Will Be Deregistered", *Dawn* (online), 6 January 2017, <https://reliefweb.int/report/pakistan/idps-unwilling-return-will-be-deregistered> (accessed 14 December 2019).

63 Alice Thomas, "Rising Waters, Broken Lives. Experience from Pakistan and Colombia Floods Suggests New Approaches Are Needed", in *Humanitarian Crises and Migration. Causes, Consequences and Responses*, ed. Susan F. Martin, Sanjula Weerasinghe and Abbie Taylor (London and New York, NY: Routledge, 2014), 53–76.

64 IDMC, *Pakistan: Displacement Caused by Conflict and Natural Disasters, Achievements and Challenges* (Geneva, 10 January 2012), 7.

65 Maru, *Causes, Dynamics, and Consequences of Internal Displacement in Ethiopia* (see note 40), 21.

### Advantages and disadvantages of registration

IDPs are often considered “statistically invisible” because they live scattered within host communities or with relatives and are not easily discernible in everyday life. As a result, the full extent of the need for support sometimes goes unrecognised or is denied by state authorities. In order to provide targeted assistance to IDPs, they must generally register with local or national authorities. Apart from purely practical challenges – similar to those involved in the registration of cross-border refugees – an additional problem arises here: An official status as an IDP may have the effect of singling them out from other nationals not affected by displacement. This can have negative consequences. On the one hand, the “visibility” generated by official registration can be dangerous, especially for persecuted minorities, for example if it results in physical attacks or triggers targeted discrimination. On the other hand, there is a danger that state actors will use registration as a pretext for shifting the responsibility for the protection and care of the persons concerned to aid organisations and will no longer fulfil their obligations towards their own nationals. This issue demands a high degree of political caution and sensitivity from international actors. Not only should a responsible and data-protection-compliant approach to personal data be guaranteed. Above all, registration should never be an end in itself, but should be made dependent on whether it is beneficial or detrimental to the overall situation of IDPs.

### Durable solutions are only possible if disadvantages caused by displacement are eliminated.

The comparison of two very different country contexts – Ethiopia and Pakistan – illustrates the longer-term challenges arising from internal displacement. State actors who shy away from structural change often try to restore the status quo that existed before the displacement. Hence they press for a quick return of the affected people to their homes. If, however, the circumstances for a safe return are not assured, or if the persons concerned have other preferences, this approach perpetuates the disadvantage suffered in the context of the initial displacement. For durable solutions, it is essential that disadvantages caused by displacement are eliminated. It should not matter whether people settle where they are, return to their home towns, or settle elsewhere. Such solutions are challenging and require that the respective state shows a high degree of willingness as well as an ability to act – international actors can help to strengthen both. These efforts are based on the standards and regulatory approaches to internal displacement that have been developed over the past three decades.

settlement areas, and they are resettled without prior consultation.<sup>66</sup>

A recent concerning development under the leadership of Prime Minister Ahmed is the state-organised repatriation of people who have only recently fled violent conflicts in their home areas. Such repatriations to areas that are sometimes still unsafe are not carried out under physical duress. In some cases, however, they are a prerequisite for access to food aid and other support services. For this reason, those who are particularly dependent on support have no choice but to accept the risks of return.<sup>67</sup>

<sup>66</sup> Ibid., 27f.

<sup>67</sup> Refugees International, *Statement: Ethiopia's Treatment of Its Own IDPs Making Crisis Worse* (online), (Washington, D.C., 18 May 2019), <https://www.refugeesinternational.org/reports/2019/5/17/ethiopias-treatment-of-its-own-idps-making-crisis-worse> (accessed 14 October 2019).

# Political and Legal Regulatory Approaches

In contrast to the global refugee regime that is enshrined in the Geneva Convention and institutionally consolidated by the existence of UNHCR, the rights of IDPs are secured neither institutionally nor under international law. Nevertheless, important legal advancements have been made in the last three decades that strengthen the rights of IDPs and identify possible solutions. In addition to the UN Guiding Principles on Internal Displacement, there are also points of reference at the regional level, in particular concerning the protection of IDPs and the provision of development-oriented support. At the national level, more and more legal protection instruments have also been created.

## Internal Displacement on the International Agenda

When assessing international developments pertaining to internal displacement over time, it is useful to distinguish between normative (binding and non-binding under international law), institutional, and discursive developments. The timeline in Figure 4 provides an overview of the first two areas.

## International Legal Foundations

In 1992, the UN Commission on Human Rights adopted its first resolution on IDPs, in which it called, inter alia, for the appointment of a UN Special Representative for IDPs.<sup>68</sup> The first incumbent was former Suda-

<sup>68</sup> See UN Commission on Human Rights, *Resolution E/CN.4/RES/1992/73*, 5 March 1992 <https://www.refworld.org/docid/3b00f0e71c.html> (accessed on 10 February 2020). Subsequently, the UN Commission on Human Rights adopted an annual resolution on internal displacement, and from 1994 onwards, the UN General Assembly adopted resolutions every two years. The UN Human Rights Council,

nese Foreign Minister Francis Deng. The urgency of his task was underlined by the upheavals of the Bosnian War. The existence of a large group of IDPs within a European state – and the concern of Western European states that these people might cross the border – brought the issue of internal displacement to the attention of the international community. Deng used this window of opportunity to strengthen the rights of IDPs. In 1998, he presented the UN Guiding Principles on Internal Displacement to the UN Commission on Human Rights, which were developed under his aegis.

### The Guiding Principles became the main point of reference for the protection of IDPs.

These Guiding Principles subsequently became the central reference point for the protection of IDPs under international law.<sup>69</sup> They do not contain any new legal norms, but delineate how existing principles of international law and humanitarian law can be applied in the context of internal displacement. They are structured according to the different phases

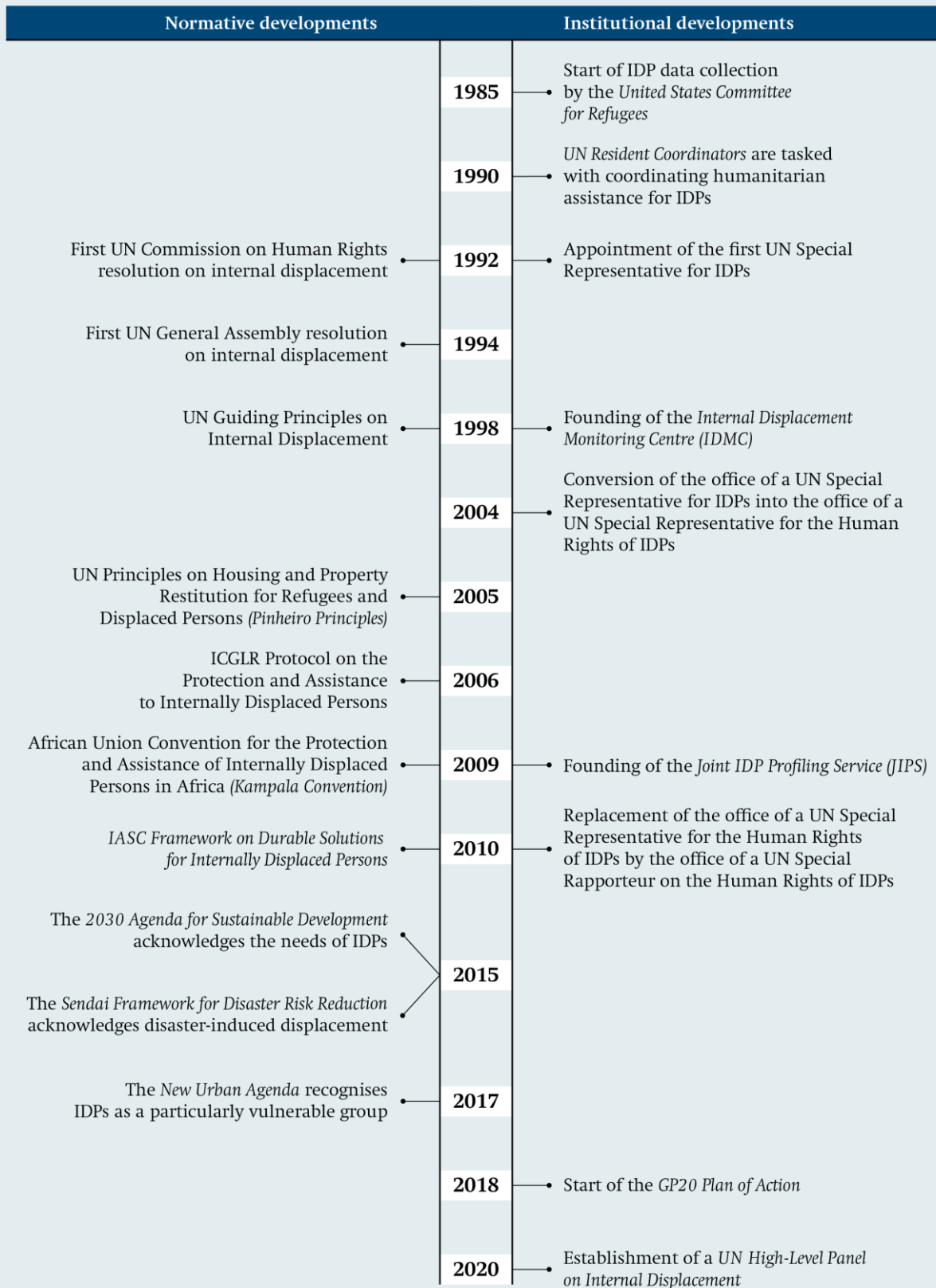
which replaced the UN Commission on Human Rights in 2006, continues to adopt a new resolution on internal displacement every two to three years. An overview of the resolutions can be found at the Office of the High Commissioner for Human Rights (OHCHR), *Resolutions of the Human Rights Council, Previous Commission on Human Rights, and the General Assembly on Internally Displaced Persons*, <https://www.ohchr.org/EN/Issues/IDPersons/Pages/Resolutions.aspx> (accessed 16 October 2019).

<sup>69</sup> See inter alia the reaffirmation of the guidelines by resolutions of the UN General Assembly and Human Rights Council: UN General Assembly, *Resolution A/RES/66/165*, 22 March 2012, <https://undocs.org/en/A/RES/66/165> (accessed 10 February 2020); UN Human Rights Council, *Resolution A/HRC/RES/23/8*, 20 June 2013, <https://undocs.org/en/A/HRC/RES/23/8> (accessed 10 February 2020).



Figure 4

## Internal displacement on the international agenda



of displacement. Section II is devoted to protection against displacement, Section III to protection during displacement, and Section V to return, resettlement, and reintegration. These are supplemented by general guidelines (Section I) and guidelines on humanitarian aid (Section IV). The primary responsibility of national authorities is a recurrent theme throughout the Guiding Principles.<sup>70</sup>

One of Deng's main concerns was to overcome the contradictions between national sovereignty and an international responsibility to stand up for those in need of protection. Under the slogan "sovereignty as responsibility", he advocated a sophisticated understanding of state sovereignty that does not hold legal self-determination to be absolute, but emphasises that it goes hand in hand with the responsibility of a state towards its own population.<sup>71</sup> This understanding is taken up in the Guiding Principles, which stipulate that offers by international humanitarian organisations and other appropriate actors that can assist IDPs must not be arbitrarily rejected – "especially if the competent authorities are unable or unwilling to provide the necessary humanitarian assistance".<sup>72</sup> Deng thus created the concept of a state's responsibility to protect, the non-fulfilment of which cannot be passively accepted, but rather must be compensated by the international community. He was thus one of the pioneers of the norm "Responsibility to Protect" (R2P), which was established at the UN level in the early 2000s, legitimising humanitarian interventions.<sup>73</sup>

With the publication of the Guiding Principles, the cornerstones of an international responsibility to protect IDPs were established. Over the next few years, further international and regional standards and legal instruments were developed. These include the Prin-

ciples on Housing and Property Restitution for Refugees and Displaced Persons, also known as the Pinheiro Principles, adopted in 2005. They provide refugees and IDPs with the same legal security and access to housing and land as other citizens.<sup>74</sup> In the African context, two agreements were concluded at the regional level that, to date, remain the only legally binding instruments of protection for IDPs under international law. The first is the Protocol on the Protection and Assistance to Internally Displaced Persons of the International Conference on the Great Lakes Region (ICGLR), adopted in 2006, which makes the Guiding Principles binding for the 10 member states of the ICGLR. The second is the African Union Convention for the Protection and Assistance of Internally Displaced Persons in Africa (Kampala Convention) of 2009.

The Kampala Convention, in particular, points the way forward in several respects. First of all, it is the only legally binding instrument at the regional level to date that not only affirms the rights of IDPs but also spells out the resulting obligations for state actors. In addition, the Kampala Convention expands the possibilities for international engagement by authorising the African Union to intervene in member states if necessary and to help create durable solutions for IDPs. After Swaziland became the 15th African state to ratify the Kampala Convention, it entered into force in 2012. In the meantime, 31 states have acceded.<sup>75</sup> A number of others have publicly expressed their willingness to do so soon.<sup>76</sup>

### The end of internal displacement is not a one-off event, but a process.

At the UN level, it was Walter Kälin who promoted the implementation of the Guiding Principles in the national context. In 2004, he took over the UN office of Special Representative from Francis Deng, but with

<sup>70</sup> See United Nations, *Guidelines on Internal Displacement* (see note 1).

<sup>71</sup> See Francis M. Deng, "Frontiers of Sovereignty: A Framework of Protection, Assistance, and Development for the Internally Displaced", *Leiden Journal of International Law* 8, no. 2 (1995): 249–86.

<sup>72</sup> United Nations, *Guidelines on Internal Displacement* (see note 1), 11.

<sup>73</sup> Francis M. Deng, "From 'Sovereignty as Responsibility' to the 'Responsibility to Protect'", *Global Responsibility to Protect* 2, no. 4 (2010): 353–70. Both the IDP guidelines and the R2P concept were confirmed by the UN General Assembly in a resolution at the 2005 World Humanitarian Summit; see UN General Assembly, *Resolution A/RES/60/1*, 24 October 2005, <https://undocs.org/en/A/RES/60/1> (accessed 10 February 2020).

<sup>74</sup> See Centre on Housing Rights and Evictions, *The Pinheiro Principles. United Nations Principles on Housing and Property Restitution for Refugees and Displaced Persons* (Geneva, 2005), <https://www.humanitarianlibrary.org/sites/default/files/2014/07/99774.pdf> (accessed 20 December 2019).

<sup>75</sup> See UNHCR, "UNHCR Welcomes Ethiopia's Ratification of Kampala Convention", UNHCR Press Release, 14 February 2020, <https://www.unhcr.org/news/press/2020/2/5e468f7d4/unhcr-welcomes-ethiopia-ratification-kampala-convention.html> (accessed 11 March 2020).

<sup>76</sup> ICRC, *The Kampala Convention: Key Recommendations Ten Years On* (Geneva, December 2019), 18.

a new title that now entailed a focus on human rights (UN Special Representative for the Human Rights of Internally Displaced Persons).<sup>77</sup> During Kälín's term of office, the UN Inter-Agency Standing Committee (IASC) developed a key document that was to shape discussions on internal displacement for years to come: The Framework on Durable Solutions for Internally Displaced Persons for the first time defined the end of internal displacement not as a one-off event, but as a process, in the course of which the special needs of those affected are gradually reduced.<sup>78</sup>

Since the mid-2010s, some contradictory developments have taken place. On the one hand, internal displacement is increasingly being taken into account in important development and humanitarian processes. For example, the SDGs, which were adopted in 2015, list IDPs as a vulnerable group. The Sendai Framework for Disaster Risk Reduction 2015–2030, adopted the same year, contains recommendations on how to prevent or manage disaster-induced displacement. The core commitments agreed at the World Humanitarian Summit 2016 include the ambitious goal of halving the number of IDPs by 2030.<sup>79</sup> In addition, the New Urban Agenda of 2017 recognises the particular challenges faced by IDPs in urban areas.<sup>80</sup>

On the other hand, the topic is consistently omitted in key refugee and migration-related processes. Whereas in 2015 and 2016 cross-border migratory movements moved to the top of the international agenda in the context of large-scale immigration to Europe,

the issue of internal displacement has not received the same attention, despite steadily increasing numbers.<sup>81</sup> In the New York Declaration for Refugees and Migrants of 2016, IDPs are only mentioned in the introduction, and neither the Global Refugee Compact nor the Global Migration Compact, adopted at the UN level in December 2018, takes IDPs into account.<sup>82</sup> This has serious consequences, for example in the distribution of funds earmarked for the implementation of the two compacts.

## Institutional Developments and Responsibilities

From the beginning, institutional responsibilities for IDPs were fragmented. In the event of severe crises, they were distributed ad hoc to those humanitarian actors who were on the ground. The deficiencies of this system were known early on. As early as 1988, the UN General Assembly called for more effective coordination of humanitarian aid for IDPs. Since 1990, UN Resident Coordinators have taken on these institutional responsibilities, but significant shortcomings remain.<sup>83</sup>

In 1998, IDMC, financed by the Norwegian Refugee Council, was established. The work of this organisation improved the quality and availability of the data on IDPs and paved the way for a first stocktaking of the situation of IDPs world-wide. Two major UN publications in 2004 and 2005 came to the unanimous conclusion that the existing system could not ensure

<sup>77</sup> See The Brookings Institution and University of Bern, *Addressing Internal Displacement: A Framework for National Responsibility* (Washington, D.C., and Bern, April 2005).

<sup>78</sup> See Walter Kälín, *Report of the Representative of the Secretary-General on the Human Rights of Internally Displaced Persons*, A/65/282, 11 August 2010; UN Human Rights Council, *Framework on Durable Solutions for Internally Displaced Persons*, A/HRC/13/21/Add.4, 9 February 2010, <https://undocs.org/en/A/HRC/13/21/Add.4> (accessed 10 February 2020).

<sup>79</sup> See UN General Assembly, *Transforming Our World: The 2030 Agenda for Sustainable Development*, Resolution A/RES/70/1, 21 October 2015, <https://undocs.org/en/A/RES/70/1> (accessed 10 February 2020); United Nations, *New Urban Agenda*, <http://habitat3.org/wp-content/uploads/NUA-English.pdf> (accessed 10 February 2020).

<sup>80</sup> See *Leave No One Behind: A Commitment to Address Forced Displacement*, High-Level Leaders' Roundtable, Core Responsibility Three of the Agenda for Humanity, World Humanitarian Summit, Istanbul, 23–24 May 2016, [https://www.agendaforhumanity.org/sites/default/files/resources/2017/Jul/LEAVE\\_NO\\_ONE\\_BEHIND-A\\_COMMITMENT\\_TO\\_ADDRESS\\_FORCED\\_DISPLACEMENT.pdf](https://www.agendaforhumanity.org/sites/default/files/resources/2017/Jul/LEAVE_NO_ONE_BEHIND-A_COMMITMENT_TO_ADDRESS_FORCED_DISPLACEMENT.pdf) (accessed 16 October 2019).

<sup>81</sup> Steffen Angenendt and Anne Koch, "Die internationale Zusammenarbeit in der Flüchtlings- und Migrationspolitik – fragmentierte Teilordnungen unter Veränderungsdruck", in *Auflösung oder Ablösung? Die internationale Ordnung im Umbruch*, ed. Hanns W. Maull, SWP Studie 21/2017 (Berlin: Stiftung Wissenschaft und Politik, December 2017), 73–89 (81).

<sup>82</sup> See UN General Assembly, *New York Declaration on Refugees and Migrants*, A/RES/71/1, 3 October 2016, [https://www.un.org/en/development/desa/population/migration/generalassembly/docs/globalcompact/A\\_RES\\_71\\_1.pdf](https://www.un.org/en/development/desa/population/migration/generalassembly/docs/globalcompact/A_RES_71_1.pdf) (accessed 10 February 2020); United Nations, *Global Compact on Refugees* (New York, NY, 2018), <https://www.unhcr.org/5c658aed4> (accessed 10 February 2020); UN General Assembly, *Global Compact for Safe, Orderly and Regular Migration*, A/RES/73/195, 11 January 2019, <https://undocs.org/en/A/RES/73/195> (accessed 10 February 2020).

<sup>83</sup> Roberta Cohen and Francis M. Deng, *Masses in Flight. The Global Crisis of Internal Displacement* (Washington D.C.: Brookings Institution Press, 1998), 127.

the protection of IDPs.<sup>84</sup> The findings of these reports were an important driving force behind the UN humanitarian reform process completed in 2005, as well as the structural reforms within individual aid organisations.<sup>85</sup> Since then, UNHCR, as head of the Global Protection Cluster, has had primary responsibility for the protection of conflict-induced IDPs and shares the leadership of the Camp Coordination and Camp Management cluster with the International Organization for Migration (IOM).<sup>86</sup> Furthermore, OCHA and UNHCR set up organisational units specifically focussed on IDPs, and the International Committee of the Red Cross (ICRC) developed, for the first time, an official position on the consideration of IDPs in its work. Within the United Nations Development Programme (UNDP), the Bureau for Crisis Prevention and Recovery was given responsibility for internal displacement. In addition, the Joint IDP Profiling Service (JIPS) was established in 2009. As a service provider, it offers to collect socio-demographic data on individual groups affected by internal displacement, thus facilitating targeted support. With the founding of the Global Program on Forced Displacement in the same year, displacement-related issues were put on the World Bank's agenda, but without an explicit focus on internal displacement.

These institutional advances were thwarted by setbacks in other areas or were not sustainable. In 2010, the office of the UN Special Representative for the Human Rights of Internally Displaced Persons was replaced by that of a UN Special Rapporteur on the same issue. Although the change of mandate was presented to the outside world as a purely technical reform, it did in fact mean a downgrading of the office. Since then, it no longer entails official employment with the UN, but is fulfilled by a private indi-

vidual without remuneration.<sup>87</sup> The already poorly equipped position has only minimal travel funds. This complicates one of the role's core tasks — official country visits — and makes the respective office-holders dependent on additional support from individual donor countries. At the same time, a number of humanitarian organisations, in particular OCHA, UNHCR, and the ICRC, reduced the size of their organisational units dealing with internal displacement or disbanded them altogether in the early 2010s, referencing the successful mainstreaming of the issue. Finally, UN actors have been urged by their donors to focus on their core mandates in the face of an increasing number of major crises and the resulting growing funding gaps, that is, in the case of UNHCR, on the protection of cross-border refugees.<sup>88</sup>

A few years later, the fact that IDPs were not mentioned in the 2016 New York Declaration for Refugees and Migrants prompted these same actors to reposition themselves on the issue. UNHCR, in particular, took a self-critical look at its previous role in the context of internal displacement during an operational review process in 2017. In the report that concluded this review, the organisation committed to giving greater priority to IDPs and formulated the goal of systematically raising money for cases of protracted internal displacement.<sup>89</sup>

In order to meet the complex challenges posed by internal displacement, much more flexible and longer-term financial resources are needed than are currently available. A reform of international financing structures would be in line with both the goals formulated in the “New Way of Working” and the recommendation on the Humanitarian — Development — Peace Nexus (the so-called Triple Nexus) adopted by the Organisation for Economic Co-operation and Development (OECD) Development Assistance Committee in February 2019.<sup>90</sup> Due to existing

**84** See Simon Bagshaw and Diane Paul, *Protect or Neglect? Toward a More Effective United Nations Approach to the Protection of Internally Displaced Persons* (Washington, D.C., and New York, NY: The Brookings Institution and OCHA, November 2004); Costanza Adinolfi et al., *Humanitarian Response Review* (New York, NY, and Geneva: United Nations, August 2005), vi, 16.

**85** Brookings-LSE Project on Internal Displacement, *Ten Years after Humanitarian Reform: How Are IDPs Faring? A Summary* (Washington, D.C.: Brookings Institution, December 2014), 1.

**86** Deng's proposal to give UNHCR a general mandate to protect IDPs was not successful; see Thomas G. Weiss and David A. Korn, *Internal Displacement. Conceptualization and Its Consequences* (London and New York, NY: Routledge, 2006), 82f.

**87** Elizabeth Ferris, *Ten Years after Humanitarian Reform: How Have IDPs Fared?* (Washington, D.C.: Brookings Institution, December 2014), 40.

**88** *Ibid.*, 40–43.

**89** See UNHCR, *Operational Review of UNHCR's Engagement in Situations of Internal Displacement* (Geneva, September 2017); Kälin and Chapuisat, *Breaking the Impasse* (see note 10); IOM, *Framework for Addressing Internal Displacement* (Geneva, 2017).

**90** See OCHA, *New Way of Working* (Geneva, 2017), <https://www.agendaforhumanity.org/sites/default/files/20170228%20NWoW%2013%20high%20res.pdf>, and OECD, *DAC Recommendation on the Humanitarian-Development-Peace Nexus* (Paris,

organisational logics and competition between different actors, however, the level of implementation of these reform proposals has been slow. Nevertheless, promising progress has been made in some areas. New flexible financial instruments have been developed in recent years to support countries hosting large numbers of cross-border refugees. These are the Global Concessional Financing Facility and the Regional Sub-window for Refugees and Host Communities, which was introduced in the 18th budget period of the International Development Association (IDA).<sup>91</sup> Comparable instruments for cases of short-term or protracted internal displacement, on the other hand, are lacking and are not planned for the coming IDA budget period.

To mark the 20th anniversary of the UN Guiding Principles on Internally Displaced Persons in 2018, UNHCR, OCHA, and the Special Rapporteur on the Human Rights of Internally Displaced Persons launched a new initiative, the GP20 Plan of Action.<sup>92</sup> This three-year action plan follows a multi-stakeholder approach and has proved to be an important catalyst for intergovernmental learning.<sup>93</sup> In parallel, IDMC and IOM established an informal dialogue format so that Geneva-based ambassadors of countries directly affected by internal displacement can exchange information. The representatives of the 18 countries involved so far have greatly appreciated the confidential framework and the depth of the discussions. Participation in the dialogue format can be seen as an indicator that the respective governments are open to dealing with the issue of internal displacement in a transparent and constructive manner. Furthermore, a common understanding of the prob-

lem is growing, which focusses on protracted internal displacement and the search for durable solutions.<sup>94</sup>

A further initiative was launched in the anniversary year of 2018. In a letter initiated by Norway and Switzerland, 37 states (including the 28 member states of the European Union, but also Afghanistan, Argentina, Georgia, Iraq, Mali, Nigeria, and Zambia) called on the UN Secretary-General to establish a High-Level Panel on Internal Displacement in order to raise international awareness of the issue and develop new approaches.<sup>95</sup> As the circle of support continued to grow, the UN Secretary-General decided to establish such a panel and entrusted UNHCR, IOM, and OCHA with the task of jointly designing and preparing it. The eight-member panel started its work in January 2020 and is expected to present a final report with recommendations after one year. It comprises government representatives, civil society, and private-sector actors, as well as representatives of international organisations, and it is supported by a secretariat in Geneva and a four-member advisory group. The members of the panel come from Afghanistan, Ethiopia, Italy, Jordan, Colombia, Norway, Rwanda, and South Sudan. Most of these countries are strongly affected by internal displacement.<sup>96</sup>

This configuration gives reason to hope that the process will not be limited to navel-gazing (whereby only internal UN coordination problems are discussed), but instead address the pressing question of how affected states' willingness to act can be strengthened. However, in the context of the corona pandemic, the field visits and consultations that were meant to inform the panel's work are unlikely to happen, and can only partially be compensated through online meetings. Since no genuine development actor was involved in assembling the panel, it will also be a core task of the newly established secretariat to ensure the engagement of organisations such as UNDP and the World Bank in the ongoing process.

2019), <https://legalinstruments.oecd.org/public/doc/643/643.en.pdf> (accessed 2 December 2019).

**91** Steffen Angenendt, Nadine Biehler, David Kipp and Amrei Meier, *Growing Needs, Insufficient Resources? How to Fund International Refugee Protection?* SWP Research Paper 13/2019 (Berlin: Stiftung Wissenschaft und Politik, November 2019), 18f.

**92** GP20 stands for 20 years Guiding Principles; see *20th Anniversary of the Guiding Principles on Internal Displacement: A Plan of Action for Advancing Prevention, Protection and Solutions for Internally Displaced People 2018–2020*, 23 May 2018, 4, <https://reliefweb.int/sites/reliefweb.int/files/resources/20180523-gp20-plan-of-action-final.pdf> (accessed 10 February 2020).

**93** Interviews with representatives of UNHCR, IOM, OCHA and IDMC, April and May 2019.

**94** Interviews with representatives of IDMC and IOM, May 2019.

**95** Letter was tweeted by NorwayUN on 26 July 2018, see <https://twitter.com/norwayun/status/1022511054121775104?lang=de> (accessed 16 October 2019).

**96** See United Nations, "Secretary-General Appoints Members of High-Level Panel on Internal Displacement", Press Release (New York, 3 December 2019), <https://www.un.org/press/en/2019/sga1930.doc.htm> (accessed 9 December 2019).



## Discursive Change

When the United States Committee for Refugees and Immigrants first collected figures on internal displacement in the mid-1980s, it was considered a purely humanitarian problem that primarily required better coordination of existing assistance.<sup>97</sup> Francis Deng, the first UN Special Representative for IDPs, emphasised the individual rights of the persons concerned during his term of office, thus adding a human rights dimension to the discourse. Since 1998, this has also been reflected in the resolutions of the UN General Assembly dealing with internal displacement.<sup>98</sup>

### A major achievement is that IDPs are mentioned as a vulnerable group in the Sustainable Development Goals.

In the years that followed, the implementation of the Guiding Principles in national law was a focal point of the international commitment to address the issue of internal displacement. The search for reasons for the continuing increase in numbers, despite progress in legislation, shifted attention to the prevalence of long-term displacement. Starting in 2009, numerous publications on the phenomenon appeared, which jointly established the term “protracted displacement” in the public discourse.<sup>99</sup> This new focus has again found its way into the political discourse: In its resolution on internal displacement in 2014, the UN General Assembly took up the concept and added a development dimension to the humanitarian and human rights perspective enshrined in previous resolutions.<sup>100</sup> The UN actors and non-governmental

organisations concerned with internal displacement took up this change in perspective and advocated that internal displacement be taken into account in the context of international development policy processes. In this context, it is a major achievement that IDPs are mentioned as a vulnerable group in the SDGs.

At the same time, a consensus has emerged between OCHA, UNHCR, and IOM that immediate emergency care for displaced persons is not enough, but that the strategies and work programmes of humanitarian actors must from the outset address the entire “displacement continuum”, from prevention to durable solutions. In recent position papers, all three organisations acknowledge the need for early cooperation with a wide range of local actors, and for capacity-building and representation of IDPs, both at the national level and within specialised ministries and local governments. Overall, the repositioning is characterised by a more development-oriented view of the issue of internal displacement than was the case just a few years ago.<sup>101</sup>

In the course of the last three decades, there has been a shift in the perception of, and the discourse on, internal displacement. As a result, it is no longer seen as a purely humanitarian problem, but instead as a multidimensional task that includes humanitarian, human rights, and development elements. This broadening of perspectives has been accompanied by the fact that more and more international actors are becoming conceptually or operationally involved in the field of internal displacement.

As they interact, these actors are forming a global regime of internal displacement that is slowly growing more solid. With the exception of IOM, which is active both in humanitarian and development policy, each actor involved is firmly rooted in one of the three dimensions. This results in an “empty middle” in institutional terms. The new IDP regime, whose norms and standards are currently being developed, lacks an actor who would serve as a central political advocate for IDPs. Experts on IDPs agree that such a position is necessary to achieve real improvements in

<sup>97</sup> Cohen and Deng, *Masses in Flight. The Global Crisis of Internal Displacement* (see note 83), 32.

<sup>98</sup> See UN General Assembly, *Resolution A/RES/52/130*, 26 February 1998, <https://undocs.org/en/A/RES/52/130> (accessed 11 February 2020), and all subsequent General Assembly resolutions on internal displacement.

<sup>99</sup> See, e.g., the contributions in *Forced Migration Review* 33 (2009), <https://www.fmreview.org/protracted>, and IDMC, *Protracted Internal Displacement in Europe. Current Trends and Ways Forward* (Geneva, May 2009), also Katy Long, *Permanent Crises? Unlocking the Protracted Displacement of Refugees and Internally Displaced Persons* (Oxford: Refugee Studies Centre, October 2011).

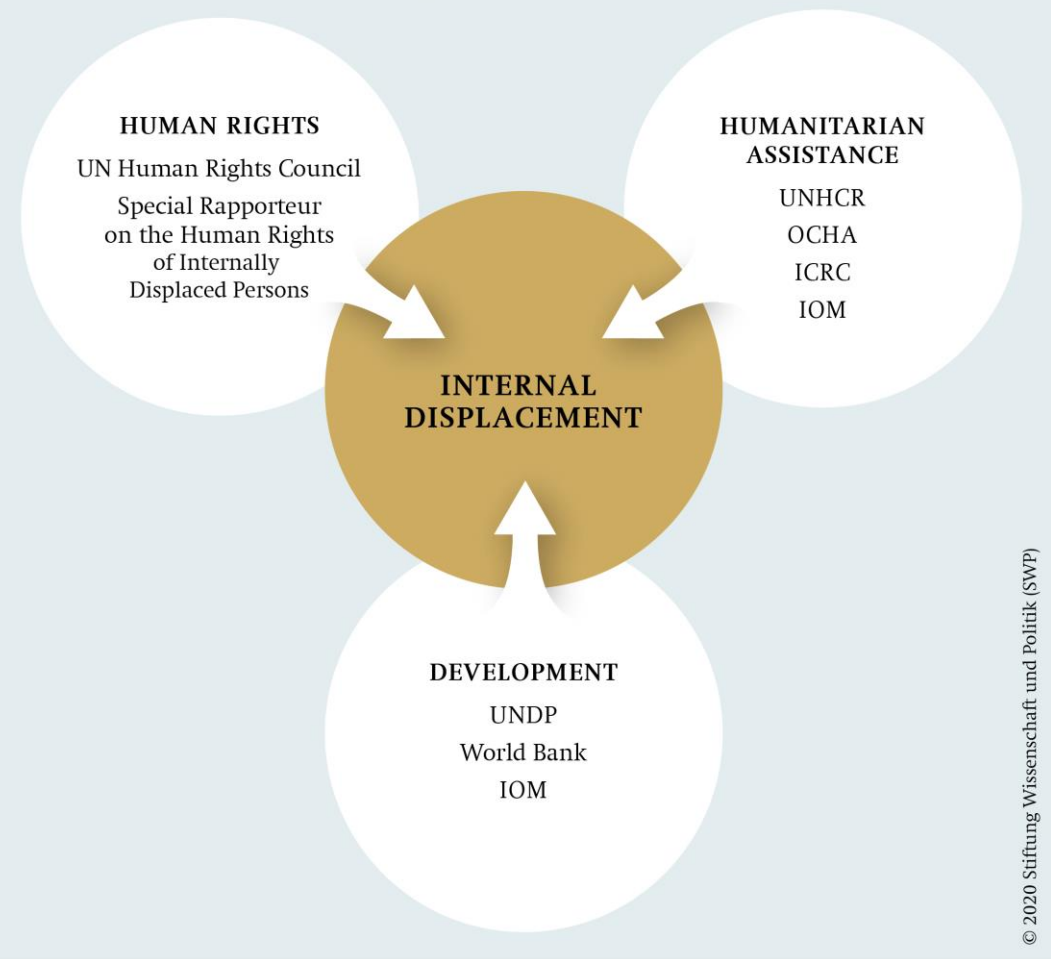
<sup>100</sup> UN General Assembly, *Resolution A/RES/68/180*, 30 January 2014, 1f., <https://undocs.org/en/A/RES/68/180> (accessed 10 February 2020). This resolution also mentions peacebuilding as a possible additional dimension for the first time; another

resolution adds reconciliation work (transitional justice), see *Resolution A/RES/72/182*, 19 January 2018, <https://undocs.org/en/A/RES/72/182> (accessed 10 February 2020).

<sup>101</sup> See UNHCR, *Operational Review of UNHCR's Engagement* (see note 89); Kälén and Chapuisat, *Breaking the Impasse* (see note 10); IOM, *Framework for Addressing Internal Displacement* (see note 89).

Figure 5

## Measures to reduce internal displacement: Key actors



protection and support for IDPs.<sup>102</sup> It would therefore make sense to reintroduce the post of a Special Representative for IDPs who reports directly to the UN Secretary-General and deals with the issue in all its dimensions. In the spirit of the Triple Nexus, greater attention should also be paid to the peace-building dimension of internal displacement, and the relevant actors should be involved systematically and at an early stage in the debates on internal displacement.

## National Protection Instruments

Since the UN Guiding Principles on Internal Displacement are not binding under international law, they

only take effect if they are integrated into national legal systems. The fact that this is increasingly the case speaks for their now consolidated and growing importance.<sup>103</sup> The transposition of the Guiding Principles into national law can take different forms. It can either result in national legislation or be reflected in policy instruments and action plans based on the Guiding Principles.

<sup>102</sup> Interviews with representatives of UNHCR, OCHA, the ICRC, IOM, IDMC and OHCHR, April and May 2019.

<sup>103</sup> Ileana Nicolau and Anaïs Pagot, “Laws and Policies on Internal Displacement: Global Adoption and Gaps”, *Forced Migration Review* 59 (2018): 9–10.

### Laws alone are not enough when resources are scarce or a country's legal system is overloaded.

A legal basis is important to make state authorities accountable and to make the rights of IDPs enforceable. However, legislative procedures are usually cumbersome and lengthy, and laws alone are not sufficient when resources are lacking or when a country's legal system is fundamentally overloaded or otherwise not functioning. Policy instruments such as ministerial decisions, ordinances, or action plans can be adopted more quickly, and this facilitates the application of general legal regulations in concrete cases of displacement. To date, the protection of IDPs has been enshrined in law in 13 countries, and relevant policy instruments exist in 35 countries.<sup>104</sup> International actors' ability to make a difference has been inconsistent: On the one hand, progressive national legal instruments have emerged under their guidance, while on the other hand, they have had little influence on the implementation of corresponding provisions.<sup>105</sup> More important are often the positions of sub-national actors. In Afghanistan, for example, the implementation of the Afghan National Policy on Internal Displacement, adopted in 2013, is failing due to unresolved land conflicts because of resistance at the regional and local levels.<sup>106</sup> In contrast, the efforts to establish a national protection instrument in Ethiopia were largely motivated by a previous initiative at the regional level.<sup>107</sup>

Given the difficulties in applying displacement-specific legal and policy instruments, other formats are worth exploring. Depending on the context, a sectoral approach that systematically takes into account the needs of IDPs in different policy areas may be a more effective form of protection. An example of this would be to include school access

for IDP children in national education law.<sup>108</sup> From a development perspective, mainstreaming the concerns of IDPs in national legislation is particularly promising if it makes existing structures more inclusive, instead of creating unsustainable parallel structures.<sup>109</sup>

The 31 African states that have so far acceded to the Kampala Convention have, by ratifying it, committed themselves to transposing the provisions contained therein into national law. So far, only one state has done so: In December 2018, the National Assembly of Niger passed a law to this effect. This was preceded by an extensive national consultation process, supported by UNHCR and the Special Rapporteur on the Human Rights of Internally Displaced Persons, in which state actors as well as traditional and religious authorities participated.<sup>110</sup> This example shows that international actors can help to give the Kampala Convention greater prominence in individual states, especially by supporting national administrations.

### Persuasion at the regional level is more effective than economic sanctions or threatening military gestures.

The overall slow progress in ratifying and implementing the Convention indicates a lack of political will. Regional and (sub-)regional forums play an important role in driving the process forward, such as the Intergovernmental Authority on Development, the Southern African Development Community, and the Economic Community of West African States (ECOWAS). Thematic exchanges among neighbouring countries, which often face similar challenges, can increase the willingness of national decision-makers

**104** See Global Protection Cluster, *Global Database on IDP Laws and Policies*, <http://www.globalprotectioncluster.org/global-database-on-idp-laws-and-policies/> (accessed 20 April 2020).

**105** Phil Orchard, *Protecting the Internally Displaced. Rhetoric and Reality* (London and New York, NY: Routledge, 2018), 11.

**106** *Ibid.*, 12.

**107** Behigu Habte and Yun Jin Kweon, "Addressing Internal Displacement in Ethiopia", *Forced Migration Review* 59 (2018): 40–42.

**108** Jacopo Giorgi, *Regulatory Frameworks on Internal Displacement. Global, Regional, and National Developments* (Geneva: Global Protection Cluster, November 2016), 22.

**109** See Center on International Cooperation, *Addressing Protracted Displacement: A Framework for Development-Humanitarian Cooperation* (New York, NY, December 2015), 6.

**110** See UNHCR, "Niger Becomes First African Country to Adopt National Law for Protection and Assistance of Internally Displaced People", Press Release (Geneva, 7 December 2018), <https://www.unhcr.org/af/news/press/2018/12/5c0a29eb4/niger-becomes-first-african-country-to-adopt-national-law-for-protection.html> (accessed 16 October 2019).



to commit themselves to the protection of IDPs.<sup>111</sup> In this area, the GP20 process has provided new impetus. Thus, Senegal and Cape Verde committed themselves to ratifying the Kampala Convention after a meeting of parliamentarians from ECOWAS countries with regional representatives of the GP20 process in March 2019.<sup>112</sup> A quantitative study published in 2018 on the effectiveness of the UN Guiding Principles on Internal Displacement supports the thesis that regional forums and actors play a central role. The results of the study show that persuasion at the regional level has a greater influence on the national implementation of the Guiding Principles than economic sanctions or threatening military gestures.<sup>113</sup> This is an important lesson for future efforts to protect IDPs.

**111** Angela Cotroneo, “Strengthening Implementation of the Guiding Principles by Affected States”, *Forced Migration Review* 59 (2018): 29–31.

**112** Interviews with the ICRC and GP20 representatives, May 2019.

**113** Gabriel Cardona-Fox, *Exile within Borders. A Global Look at Commitment to the International Regime to Protect Internally Displaced Persons*, International Refugee Law Series, vol. 15 (Leiden: Brill, 2018), 173f.

# Perspectives and Scope for Action for International Engagement

Internal displacement is often a direct consequence of wars and violent conflicts. In these situations, the most pressing challenges are not initially displacement-specific. Instead, as is currently the case in Syria, the focus is on the much larger areas of conflict resolution, reconstruction, and reconciliation. Even in the event of devastating natural disasters, immediate emergency aid is the first priority for all those affected, whether or not they have been displaced. The circumstances are fundamentally different in the case of protracted displacement, that is, when disadvantages caused by displacement become permanent. In this case, the situation of those affected is not an inevitable consequence of acute triggers, but either politically intended, the result of political failures, or due to a lack of capacity on the part of the respective government.

Protracted situations thus pose a dilemma for international actors who wish to help reduce the levels of internal displacement. On the one hand, there is a need for action specific to displacement that goes far beyond the usual repertoire of humanitarian aid. On the other hand, these cases point directly to government culpability or government deficits and are therefore politically highly sensitive. International offers of support, which are primarily based on human rights, are often perceived by the governments of affected states as damaging to their reputations, and are therefore rejected as inadmissible interference in internal affairs. New approaches have been opened up by the shift in discourse in recent years from a purely rights-based approach to a more development-oriented approach that appeals to the self-interests of states. But what are the concrete contributions that development actors can make in the context of internal displacement? Following the UN Guiding Principles on Internal Displacement, it is useful to distinguish three

phases, namely prevention, protracted displacement, and the search for durable solutions.

## Prevention

In the area of prevention, development cooperation can play an important role through its standard, non-displacement-specific activities and objectives. Since poor and marginalised population groups are often affected disproportionately by internal displacement, poverty reduction and democracy promotion are important pillars of any prevention strategy. However, such strategies differ depending on the context and cause of possible displacements. Crisis prevention is the best measure against internal displacement caused by conflict. In the run-up to violent conflicts, primarily foreign and security policy interventions are required. At an earlier stage, however, development policy can make an important contribution by promoting good governance and strengthening human rights. Peace and reconciliation efforts can reduce the risk of recurring displacement, especially at the local level.

### **Prevention of displacement must not lead to prescribed immobility.**

Displacements due to natural disasters, on the other hand, can be reduced by a number of measures, although not completely prevented. This includes disseminating knowledge about natural events and making long-term adjustments to settlement behaviour on this basis, as well as disaster control and sustainable infrastructure planning. In the case of slow-onset environmental changes, the range of possible prevention strategies is wider. It comprises resilience pro-

motion and climate adaptation strategies, which must always go hand in hand with measures to reduce structural discrimination against marginalised groups. In this area in particular, it is crucial that the prevention of displacement does not lead to prescribed immobility. On the one hand, it is the right of every individual to move freely within their own country. On the other hand, the line between voluntary and involuntary mobility is blurred because migration itself is a widespread climate adaptation strategy.<sup>114</sup>

## Entry Points in the Case of Protracted Displacement

For a long time, ongoing displacement situations were regarded as a field of activity for humanitarian actors, whereas approaches to longer-term solutions were considered the responsibility of development actors. Now this sequence of involvement is being questioned. Even in cases whereby, for example, the return to the place of origin desired by those affected is not yet possible, efforts should be made to reduce the degree of marginalisation and vulnerability of IDPs and to increase their autonomy. In this way, they can be prepared for possible permanent solutions later on.<sup>115</sup> First and foremost, it is a matter of holding to account those state authorities who are responsible for safeguarding the rights of their own citizens. Development policy actors should therefore strengthen the capacity of local administrations in regions where IDPs have sought refuge, and support the competent authorities in developing infrastructure and basic services. This is essential in the event of longer-term displacement in order to prevent measures that were intended as emergency aid from becoming permanent as well as to keep parallel structures from emerging. IDPs in many countries need special support in accessing political rights and income opportunities. Both issues are crucial for strengthening the independence and self-determination of those affected. Although IDPs may have specific needs, it is important to recognise at the same time the need to support persons not affected by

displacement in order to prevent distribution conflicts. More and more area-based approaches are therefore being established that support all persons residing in a region, and thus also take into account the needs of the host communities.

Development actors can also make a further significant contribution by promoting the open and transparent handling of internal displacement, which is still often a taboo subject. Efforts by human rights actors in this direction are easily perceived as unjustified criticism from the outside. Development actors, on the other hand, can use their existing access to state actors to draw attention to the costs and risks to society as a whole, especially those costs and risks that arise in the context of protracted internal displacement. This would benefit a political culture in which the topic is openly discussed. This kind of open-discussion culture, as well as systematic data collection, is a basic requirement for developing effective solutions.

## Durable Solutions

The concept of durable solutions is based on the assumption that the special needs of IDPs do not end when they have found temporary protection, nor when the original reason for their displacement ceases to exist. Irrespective of their future place of residence, internal displacement is only deemed to have ended when the persons concerned no longer have a need for support due to displacement, and they enjoy the same access to rights as fellow citizens not affected by displacement.<sup>116</sup>

As in all issues related to internal displacement, state actors are first and foremost obliged to protect the rights of their own citizens. During this phase, development actors can make constructive contributions in two ways. Firstly, they should work to ensure that the concerns of IDPs are systematically taken into account in national development plans and sectoral policy processes. On the other hand, the path towards durable solutions must be shaped in a participatory manner. Only if those affected are involved in the planning and management processes can it be ensured that their rights and needs are being taken into account. One example is the free choice of place of residence within one's own country: Depending on

<sup>114</sup> Sarah Opitz Stapleton et al., *Climate Change, Migration and Displacement. The Need for a Risk-informed and Coherent Approach* (London and New York, NY: ODI and UNDP, November 2017).

<sup>115</sup> Kälén and Chapuisat, *Breaking the Impasse* (see note 10), 23f.

<sup>116</sup> Kälén, *Report of the Representative of the Secretary-General on the Human Rights of Internally Displaced Persons* (see note 78), 1.

the political context, state actors have a clear preference for or against the early return of displaced persons to their previous places of residence. However, both forced return and resettlement in response to state pressure perpetuate the discrimination of IDPs vis-à-vis their fellow citizens. Durable solutions can only be achieved if IDPs are enabled to make voluntary and informed decisions on where they wish to settle in the long term.

In all efforts to find durable solutions, it must be recognised that an ideal result cannot be achieved in every situation, and not for every person concerned. In many cases, voluntary return also means returning to the place where violence was previously experienced. Even if those affected were to return to the same place as before, this would not necessarily mean that they would still feel at home there in the future.<sup>117</sup> Particularly in the case of conflict-induced displacement, it is important to supplement the rights-based perspective – with the individual at its centre – with a perspective that takes account of the concerns of local communities. It is essential to involve those affected in peace processes if conflicts are to be permanently settled and the risk of recurring displacement reduced. Yet, comprehensive peace and reconciliation work also involves weighing up different models of reparation. If, after the settlement of major violent conflicts, extensive individual compensation payments are enshrined into law without ensuring implementation, this raises expectations that cannot be fulfilled. In such cases, it may be more effective and conducive to longer-term peace and stability to give clear priority to the establishment of rule-of-law structures and an inclusive political system.

**117** Megan Bradley, “Durable Solutions and the Right of Return for IDPs: Evolving Interpretations”, *International Journal of Refugee Law* 30, no. 2 (2018): 218–42.

# Conclusion – Recommendations for German Policy

The high and rising numbers of IDPs entail economic and societal costs and increase the risk of violent conflict. The international community must therefore urgently seek durable solutions and prevent further displacement. The change in perspective towards a more developmentally oriented approach to internal displacement opens up new options for action. The German government should pool its resources and, above all, commit itself to durable solutions. Two conditions must be met. First, it is essential that more reliable data is generated. Second, it is important to identify windows of opportunity for policy initiatives in countries with internal displacement, both at the national and sub-national levels.

Important partners in this work are not only the relevant UN organisations, but also the non-governmental organisations IDMC and JIPS, which focus on internal displacement. IDMC is increasingly relying on a local presence to make use of existing data on internal displacement and to strengthen the political will of national decision-makers to confront the phenomenon. This international presence is a relatively new facet of IDMC's work and requires new sources of funding. The local needs assessments conducted by JIPS, on the other hand, are an ideal starting point for targeted development programmes. Overall, a development-oriented approach is gaining more and more ground in tackling internal displacement. However, it should not be seen as an alternative but as a complement to the human rights-based approach that has prevailed to date. One practical step towards strengthening the link between the two worlds would be to initiate a secondment from the Office of the Special Representative for the Human Rights of Internally Displaced Persons to the UNDP Crisis Bureau. The German government could shoulder the costs for this.

The central political challenge is the tension between national sovereignty and external engagement. Therefore, real progress in the field of internal displacement

can only be achieved with the agreement of the states concerned. The composition of the recently established UN High-Level Panel on Internal Displacement gives reason to hope that some of the states represented there are prepared to provide new impetus at the international level. The German government should support this process. It should work at the UN level to ensure that the combined experience of the High-Level Panel and the GP20 Plan of Action results in a longer-term, state-led process that makes the international community more capable of acting in the context of internal displacement. Under no circumstances, however, should these process-oriented innovations mask the urgent need for action in the existing institutional structure. One step in the right direction would be to improve the financial and human resources of the office of the UN Special Rapporteur on the Human Rights of Internally Displaced Persons. Politically, however, it would be much more effective to re-establish the post of a UN Special Representative for Internally Displaced Persons, reporting directly to the UN Secretary-General.

A central and urgent task is to adapt existing financial instruments to the actual needs arising from internal displacement. The German government should set a good example. It should provide flexible and multi-annual funds that do not force an artificial separation between short- and longer-term support measures. It should also explore the potential of financial instruments that follow a proactive rather than a reactive logic in the sense of “anticipatory action”, and it should advocate appropriate reforms at the international level.<sup>118</sup>

**118** For the concept “anticipatory action”, see Mark Lowcock, *Anticipation Saves Lives: How Data and Innovative Financing Can Help Improve the World's Response to Humanitarian Crises* (London, 2 December 2019), <https://reliefweb.int/report/world/mark-lowcock-under-secretary-general-humanitarian-affairs-and-emergency-relief> (accessed 19 December 2019).

Germany is an important country of destination for migrants and refugees alike. One of the consequences of this is that the return of rejected asylum seekers and other persons without legal residence status is of great domestic political importance. However, in view of the far-reaching negative effects of internal displacement, the German government should endeavour to avoid returning them to their home countries if, upon return, they will end up as IDPs. This, in turn, requires a revised definition of what constitutes a successful return.

## Abbreviations

ANP	Awami National Party
ECOWAS	Economic Community of West African States
EGRIS	Expert Group on Refugee and Internally Displaced Persons Statistics
FATA	Federally Administered Tribal Areas (Pakistan)
IASC	Inter-Agency Standing Committee (UN)
ICGLR	International Conference on the Great Lakes Region
ICRC	International Committee of the Red Cross
IDA	International Development Association
IDMC	Internal Displacement Monitoring Centre (Geneva)
IDP	Internally Displaced Person
IOM	International Organization for Migration (Geneva)
JIPS	Joint IDP Profiling Service (Geneva)
MQM	Muttahida Qaumi Movement
NOREF	Norwegian Peacebuilding Resource Centre (Oslo)
OCHA	United Nations Office for the Coordination of Humanitarian Affairs
ODI	Overseas Development Institute (London)
OECD	Organisation for Economic Co-operation and Development
OHCHR	Office of the High Commissioner for Human Rights (UN)
PPP	Pakistan Peoples Party
R2P	Responsibility to Protect
SDG	Sustainable Development Goal
UN	United Nations
UNDP	United Nations Development Programme
UNHCR	United Nations High Commissioner for Refugees
UNSC	United Nations Statistical Commission



